

iCare DRSplus



**Innovating a higher standard
in retinal imaging**

For better perception **icare**



iCare DRSplus

Focus. Quality. Comfort.

iCare DRSplus® **Confocal Fundus Imaging System** uses white LED illumination to produce TrueColor and detail-rich images, setting a new effective and efficient standard of **retinal imaging**.



TrueColor Confocal Technology, with white LED, promotes **detailed 45° retinal images** and allows to **scan through cataract**.



The Confocal Technology permits imaging through **pupils as small as 2.5 mm**, without need of dilation, ensuring a comfortable patient experience.



Fast Fully Automated operation requires minimal staff training to acquire the highest quality images, speeding up the examination time.

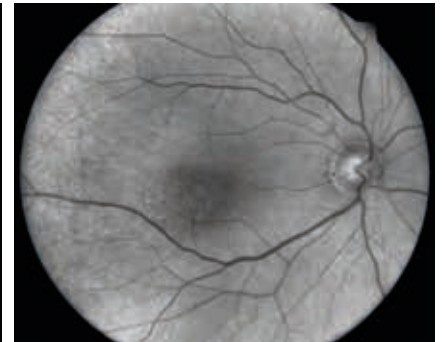


iCare DRSplus provides different imaging modalities

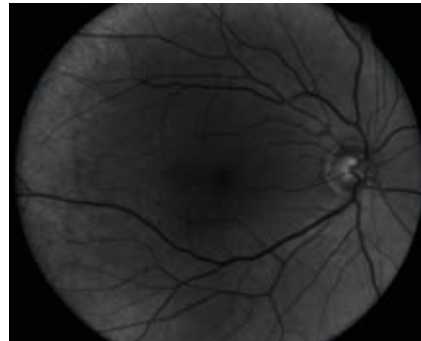
TrueColor, Infrared, Red-free, Blue and Red channels, External Eye, Stereo view* of the ONH and Mosaic*.



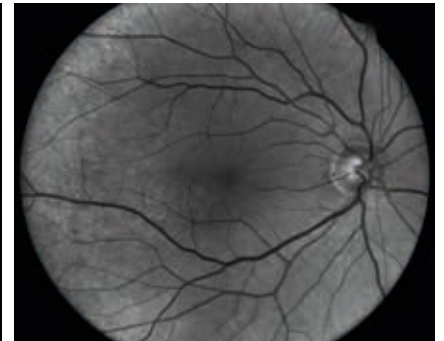
Infrared



Red-free



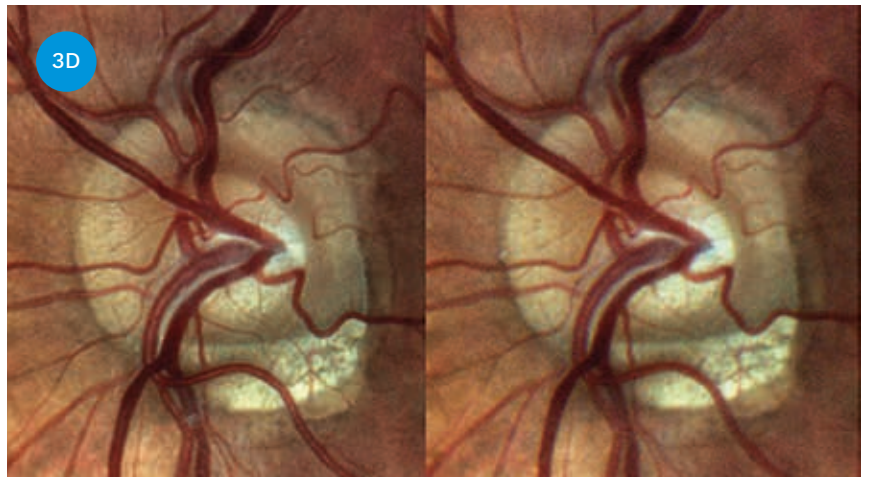
Blue



Red

Stereo Viewer Technology

DRSplus Stereo Viewer Technology* automatically captures two separate photos of the nasal field, at different angles and different focal planes (bifocal), creating improved 3D perception of the disc.



Stereo pair

External Eye Photography

Fully automatic external eye acquisition, without patient head adjustment, allows for documentation of eye surface and cornea conditions.



External Eye

The Mosaic function allows a
panoramic view of the retina, up to 80°

By using the Mosaic function* – a special stitching algorithm – DRSplus automatically combines different fields without user intervention.



iCare DRSplus **Remote Viewer**

The DRSplus Remote Viewer* is a browser-based software license that allows for reviewing from any network computer on the same local area network (LAN), with user login and password protection.



iCare DRSplus **Remote Exam**

The DRSplus Remote Exam* allows the user to control the device remotely, extending the distance between the operator and patient. Once the device is connected to the LAN of the medical office, the remote acquisition can be executed from any laptop connected to the same LAN, at a proper safe distance.



Provide your patient with a
comfortable exam experience

DRSplus is designed to optimize patient comfort during the exam, allowing for improved workflow and clinic efficiency.



Technical data

iCare DRSpus

Fundus Imaging System Features

Field of View

Individual image 45°

Mosaic (up to 9 fields) 83°

Light Sources White LED: 420-675 nm

Infrared LED: 825-870 nm

Imaging Modalities TrueColor, Infrared, Red-Free**, Blue**, Red**, Stereo*, Mosaic*

Autofocus Adjustment Range -15D to +15 D

Automatic Operations Auto-alignment, Auto-focus, Auto-exposure, Auto-capture, Auto-montage

Minimum Pupil Size Non-myd 2.5 mm

Working Distance 25 mm

Image Size 10 Megapixels

Resolution 77 pixel/degree

Fixation Targets Internal/External*

Dynamic Programmable Internal Central, Nasal, Temporal, Central-Nasal, Superior, Inferior,

Fixation Target Superior-Temporal, Superior-Nasal, Inferior-Temporal, Inferior-Nasal

External Eye Yes

Internal Computer

Display Integrated 10.1" (1280 x 800) Color, Capacitive, Multi-touch

Hard Drive SSD ≥ 480 GB

Interfaces USB port 2.0 x 3, Gigabit Ethernet Port x 1

Export / Import jpeg, pdf, DICOM*, Web API*

Remote Viewer* Up to a maximum of 5 remote stations

Dimensions/Power supply

Size (WxHxD) 300 mm x 450 mm x 650 mm / 11.8" x 17.7" x 25.6"

Weight 11 Kg (24.3 lbs)

Device Power Supply and Voltage 12V DC

Consumption Power Consumption 60W

External Power Supply Input: Related voltage 100-240V

~ 50-60 Hz 2V

Output: 12.0V DC 5.42A

Electrical Class IEC 60601-1 Class I

* Optional
**Digital filters

iCare. For better perception.

iCare is a trusted partner in ophthalmic diagnostics, offering physicians fast, easy-to-use, and reliable tools for diagnosis of glaucoma, diabetic retinopathy, and macular degeneration (AMD). Our product assortment includes automated TrueColor imaging devices, perimeters and handheld rebound tonometers.

We believe that ophthalmic care must be accessible, effortless, and reliable, and we aim to establish the next level of eye care.

CE 0123

REV08 - 2022-03



Centervue S.p.A.

Via San Marco 9H
35129 Padova, Italy
Ph. +39 049 501 8399
info@icare-world.com

Icare Finland Oy

Äyritie 22
01510 Vantaa, Finland
Ph. +358 9 8775 1150
info@icare-world.com

iCare World Australia

Level 9, 276 Flinders Street
Melbourne Victoria 3000,
Australia
Ph. +61 3 85927079
infoAU@icare-world.com

Icare USA, Inc.

8601 Six Forks Rd., Ste 310
Raleigh, NC 27615
Ph. +1 888.422.7313
Fax +1 877.477.5485
infoUSA@icare-world.com

www.icare-world.com

icare

For better perception

iCare is a trademark of Icare Finland Oy. Icare Finland Oy, Icare USA, Inc., iCare World Australia Pty Ltd and Centervue S.p.A., are parts of Revenio Group and represent the brand iCare. iCare EIDON is a trademark or a registered trademark of Icare Finland Oy in the EU and the USA and/or other countries. Centervue S.p.A. is the legal manufacturer of EIDON, EIDON AF and EIDON FA. Not all products, accessories, services or offers are approved in every market. Approved labelling and instructions may vary from one country to another. This material is intended for healthcare professionals only. © 2023 Icare Finland Oy. All rights reserved.