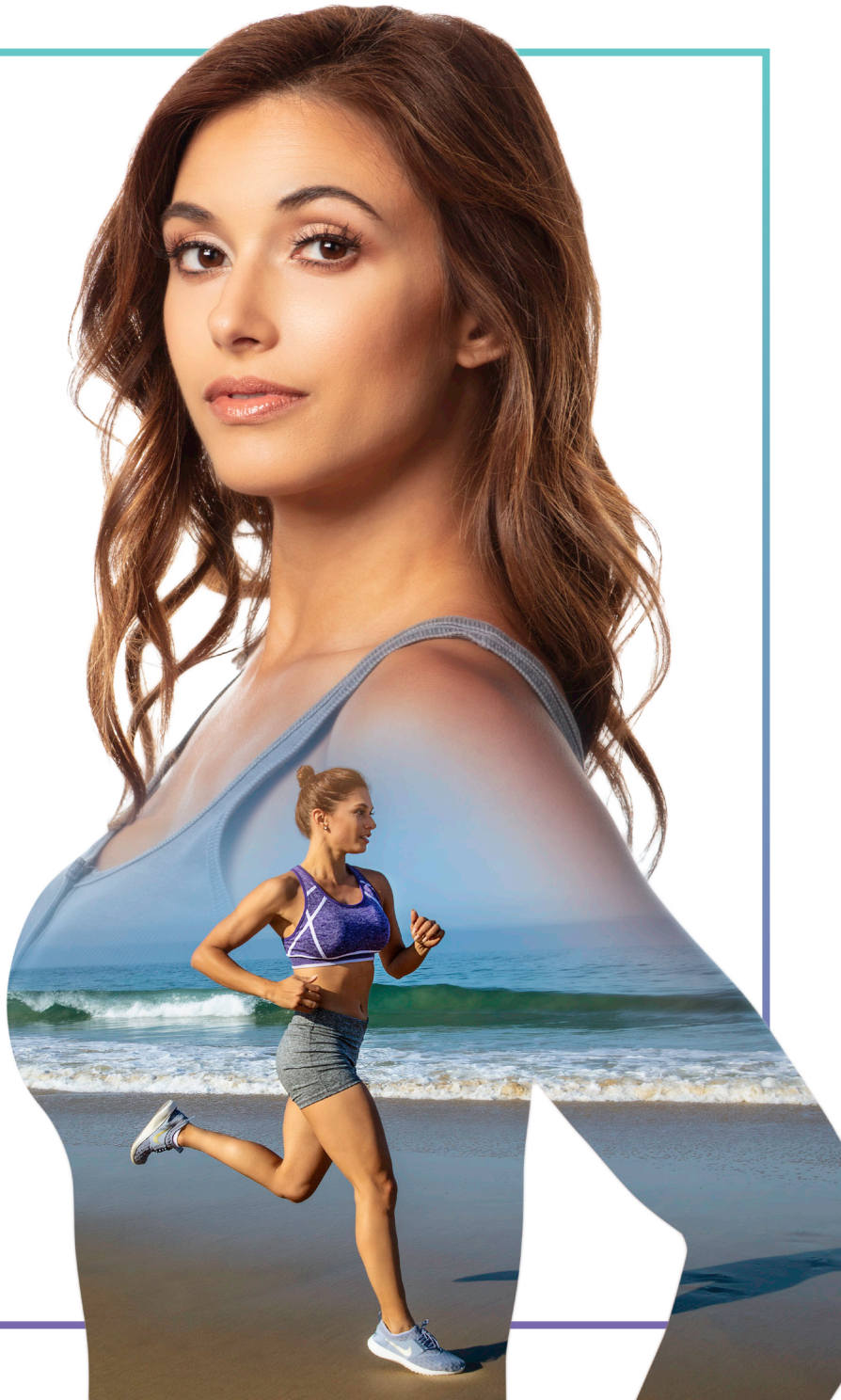


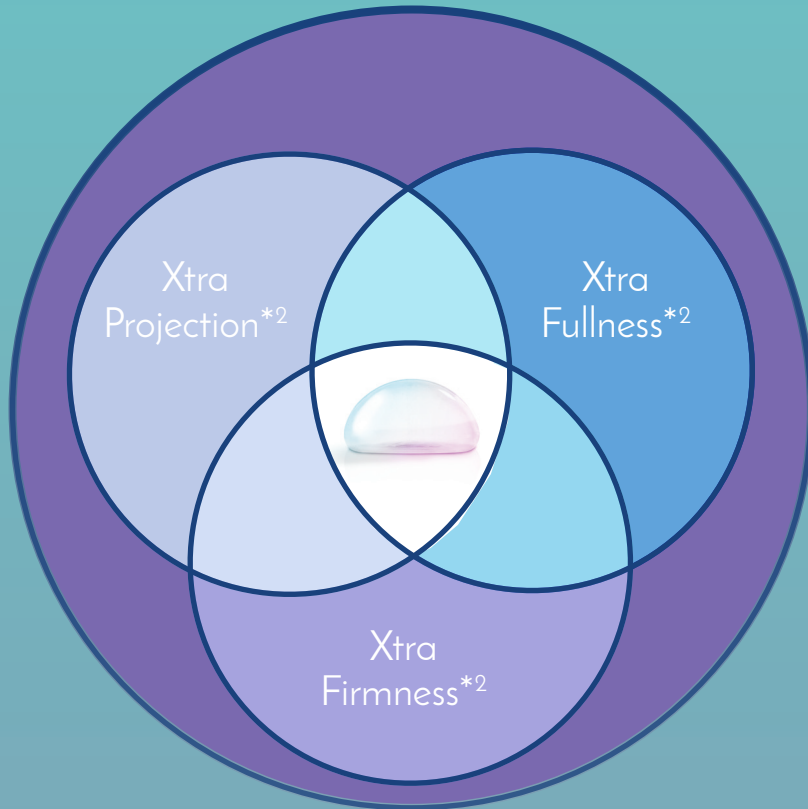
MENTOR®
MemoryGel®
Breast Implants

#1
GLOBAL
BRAND¹

 **MENTOR**®
PART OF THE Johnson & Johnson FAMILY OF COMPANIES



Why MENTOR® MemoryGel® Xtra Breast Implants?



* Product Dimensions for MemoryGel and MemoryGel Xtra Breast Implants Mentor R&D Compression Benchtop Testing - July 2017.

MENTOR® MemoryGel® Xtra Breast Implants are part of the long-trusted MemoryGel family.³

Xtra Projection*²

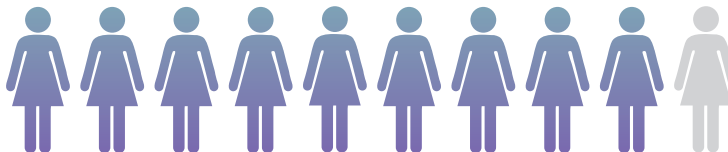
In 85% of the corresponding profiles, MemoryGel® Xtra Breast Implants provide more projection by base width than Motiva and Polytech Profiles.¹⁴

Xtra Fullness*²

Filled with MENTOR's proprietary cohesive gel, which holds together uniformly while resembling the natural give of breast tissue.^{****5}

Xtra Firmness*²

MemoryGel® Xtra Breast Implants provide increased firmness over MemoryGel® Breast Implants.^{**6}



Women Prefer MemoryGel® Xtra

In a blinded comparison, 9 out of 10 consumers chose MemoryGel® Xtra Breast implants as feeling more like natural (or real) breasts than another manufacturer's breast implants.⁵⁷



Preferred by surgeons when compared to two other brands.^{***8}

† Published device projection dimensions were compared between MemoryGel® Xtra Moderate Plus Profile vs. Polytech and Motiva Demi. MemoryGel Xtra High Profile vs. Polytech and Motiva, Full and Corse. The third party trademarks used herein are the trademarks of the respective owners.

**** As compared to saline-filled breast implants.

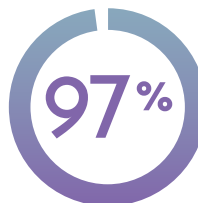
** Head-to-head compression benchtop testing between MemoryGel® Xtra and MemoryGel Breast Implants. Mentor R&D Compression Benchtop Testing - July 2017.

5 Head-to-head blinded in-person tabletop product comparison (MemoryGel Xtra vs. Inspira Responsive vs. Inspira Cohesive) with 452 respondents Mentor Consumer.

*** Head-to-head in-person tabletop product comparison (MemoryGel Xtra vs. Inspira Responsive vs. Inspira Cohesive) with 79 surgeons. Mentor Surgeon Preference Market Research Report - July 2017.

#1 GLOBAL
BRAND¹

High Patient Satisfaction^{v10}



Primary
Augmentation



Primary
Reconstruction

Successfully
used and
trusted
for over

30 YRS³

by millions of women worldwide

10 CLINICAL
STUDIES^{**11}

Over

7 MILLION

women have MENTOR[®]
Breast Implants.⁹



200,000
WOMEN^{**11}

^v Based on patient survey at 10 years in the MENTOR[®] MemoryGel[®] Breast Implant 10-Year Core Gel Clinical Study Final Report.

^{**} Mentor has conducted ten silicone gel breast implant clinical studies. Over 200,000 women have participated in these studies to provide a significant body of clinical evidence demonstrating the safety and effectiveness of MemoryGel[®] Breast Implants.

The Simplicity of Choice

Easily Select the Breast Implant Which Best Serves a Broad Spectrum of Unique Patient Journeys

Moderate Plus
Profile

300 cc

Moderate Plus
Profile Xtra

325 cc

High
Profile

375 cc

High
Profile Xtra

455 cc

Ultra High
Profile

535 cc

VOLUME

3.7 cm

4.2 cm

5.0 cm

6.0 cm

6.3 cm

PROJECTION

12.0 cm

11.9 cm

12.0 cm

12.1 cm

12.1 cm

DIAMETER

SILTEX® Round Breast Implants,
Moderate Plus Profile,
Cohesive I™



Resterilizable
Gel Sizer

Volume	Diameter	Projection	Catalog #	Resterilizable Gel Sizer
100 cc	8,1 cm	2,7 cm	354-1001	RSZ-1001
125 cc	8,8 cm	2,9 cm	354-1251	RSZ-1251
150 cc	9,4 cm	3,0 cm	354-1501	RSZ-1501
175 cc	10,0 cm	3,2 cm	354-1751	RSZ-1751
200 cc	10,5 cm	3,3 cm	354-2001	RSZ-2001
225 cc	10,9 cm	3,5 cm	354-2251	RSZ-2251
250 cc	11,3 cm	3,6 cm	354-2501	RSZ-2501
275 cc	11,7 cm	3,7 cm	354-2751	RSZ-2751
300 cc	12,0 cm	3,7 cm	354-3001	RSZ-3001
325 cc	12,3 cm	3,8 cm	354-3251	RSZ-3251
350 cc	12,6 cm	3,8 cm	354-3501	RSZ-3501
375 cc	12,9 cm	3,9 cm	354-3751	RSZ-3751
400 cc	13,2 cm	4,0 cm	354-4001	RSZ-4001
450 cc	13,7 cm	4,1 cm	354-4501	RSZ-4501
500 cc	14,1 cm	4,2 cm	354-5001	RSZ-5001
550 cc	14,4 cm	4,4 cm	354-5501	RSZ-5501
600 cc	14,7 cm	4,5 cm	354-6001	RSZ-6001
700 cc	15,7 cm	4,8 cm	354-7001	RSZ-7001
800 cc	16,6 cm	5,0 cm	354-8001	RSZ-8001

SILTEX® Round Breast Implants,
Moderate Plus Profile Xtra
Cohesive I™



Resterilizable
Gel Sizer

Volume	Diameter	Projection	Catalog #	Lower Pole Arc A- B	Resterilizable Gel Sizer
130 cc	9,1 cm	3,1 cm	TMPX-130	6.6 cm	RSZ-MPX-130
160 cc	9,5 cm	3,3 cm	TMPX-160	6.9 cm	RSZ-MPX-160
190 cc	10,1 cm	3,5 cm	TMPX-190	7.3 cm	RSZ-MPX-190
215 cc	10,5 cm	3,6 cm	TMPX-215	7.5 cm	RSZ-MPX-215
240 cc	10,9 cm	3,8 cm	TMPX-240	7.8 cm	RSZ-MPX-240
270 cc	11,4 cm	3,9 cm	TMPX-270	8.1 cm	RSZ-MPX-270
295 cc	11,6 cm	4,1 cm	TMPX-295	8.3 cm	RSZ-MPX-295
325 cc	11,9 cm	4,2 cm	TMPX-325	8.5 cm	RSZ-MPX-325
350 cc	12,2 cm	4,3 cm	TMPX-350	8.7 cm	RSZ-MPX-350
370 cc	12,7 cm	4,3 cm	TMPX-370	8.9 cm	RSZ-MPX-370
405 cc	12,8 cm	4,5 cm	TMPX-405	9.1 cm	RSZ-MPX-405
440 cc	13,1 cm	4,8 cm	TMPX-440	9.3 cm	RSZ-MPX-440
490 cc	13,6 cm	4,8 cm	TMPX-490	9.7 cm	RSZ-MPX-490
545 cc	14,1 cm	5 cm	TMPX-545	10.0 cm	RSZ-MPX-545
605 cc	14,4 cm	5,3 cm	TMPX-605	10.3 cm	RSZ-MPX-605
645 cc	15 cm	5,3 cm	TMPX-645	10.6 cm	RSZ-MPX-645
755 cc	15,7 cm	5,6 cm	TMPX-755	11.1 cm	RSZ-MPX-755

SILTEX® Round Breast Implants,
High Profile,
Cohesive I™



Resterilizable
Gel Sizer

Volume	Diameter	Projection	Catalog #	Resterilizable Gel Sizer
125 cc	8,4 cm	3,6 cm	354-4125	RSZ-1254
150 cc	8,9 cm	3,8 cm	354-4150	RSZ-1504
175 cc	9,4 cm	4,0 cm	354-4175	RSZ-1754
200 cc	9,9 cm	4,1 cm	354-4200	RSZ-2004
225 cc	10,2 cm	4,3 cm	354-4225	RSZ-2254
250 cc	10,5 cm	4,5 cm	354-4250	RSZ-2504
275 cc	10,9 cm	4,6 cm	354-4275	RSZ-2754
300 cc	11,1 cm	4,7 cm	354-4300	RSZ-3004
325 cc	11,5 cm	4,8 cm	354-4325	RSZ-3254
350 cc	11,7 cm	4,9 cm	354-4350	RSZ-3504
375 cc	12,0 cm	5,0 cm	354-4375	RSZ-3754
400 cc	12,3 cm	5,1 cm	354-4400	RSZ-4004
425 cc	12,5 cm	5,2 cm	354-4425	RSZ-4254
450 cc	12,7 cm	5,2 cm	354-4450	RSZ-4504
500 cc	13,2 cm	5,4 cm	354-4500	RSZ-5004
550 cc	13,5 cm	5,6 cm	354-4550	RSZ-5504
600 cc	14,0 cm	5,7 cm	354-4600	RSZ-6004
650 cc	14,3 cm	5,8 cm	354-4650	RSZ-6504
700 cc	14,7 cm	6,0 cm	354-4700	RSZ-7004
800 cc	15,4 cm	6,3 cm	354-4800	RSZ-8004

SILTEX® Round Breast Implants,
High Profile Xtra
Cohesive I™



Resterilizable
Gel Sizer

Volume	Diameter	Projection	Catalog #	Lower Pole Arc A- B	Resterilizable Gel Sizer
150 cc	8,4 cm	4,2 cm	THPX-150	6.9 cm	RSZ-THPX-150
180 cc	9 cm	4,4 cm	THPX-180	7.3 cm	RSZ-THPX-180
200 cc	9,4 cm	4,5 cm	THPX-200	7.6 cm	RSZ-THPX-200
230 cc	9,8 cm	4,8 cm	THPX-230	8.0 cm	RSZ-THPX-230
255 cc	10,1 cm	4,9 cm	THPX-255	8.2 cm	RSZ-THPX-255
285 cc	10,5 cm	5,1 cm	THPX-285	8.5 cm	RSZ-THPX-285
325 cc	10,8 cm	5,4 cm	THPX-325	8.8 cm	RSZ-THPX-325
340 cc	11,1 cm	5,4 cm	THPX-340	9.0 cm	RSZ-THPX-340
365 cc	11,4 cm	5,5 cm	THPX-365	9.2 cm	RSZ-THPX-365
405 cc	11,6 cm	5,9 cm	THPX-405	9.4 cm	RSZ-THPX-405
425 cc	11,9 cm	5,8 cm	THPX-425	9.6 cm	RSZ-THPX-425
455 cc	12,1 cm	6 cm	THPX-455	9.8 cm	RSZ-THPX-455
470 cc	12,3 cm	5,9 cm	THPX-470	10.0 cm	RSZ-THPX-470
515 cc	12,6 cm	6,2 cm	THPX-515	10.2 cm	RSZ-THPX-515
570 cc	13,2 cm	6,3 cm	THPX-570	10.5 cm	RSZ-THPX-570
620 cc	13,4 cm	6,5 cm	THPX-620	10.9 cm	RSZ-THPX-620
680 cc	14 cm	6,6 cm	THPX-680	11.2 cm	RSZ-THPX-680
725 cc	14,5 cm	6,7 cm	THPX-725	11.4 cm	RSZ-THPX-725
765 cc	14,7 cm	6,7 cm	THPX-765	11.7 cm	RSZ-THPX-765

SILTEX® Round Breast Implants,
Ultra High Profile,
Cohesive I™



Restorable
Gel Sizer

Volume	Diameter	Projection	Catalog #	Restorable Gel Sizer
135 cc	8,0 cm	4,3 cm	354-5135	RSZ-5135
160 cc	8,4 cm	4,5 cm	354-5160	RSZ-5160
185 cc	8,6 cm	4,6 cm	354-5185	RSZ-5185
215 cc	8,9 cm	4,7 cm	354-5215	RSZ-5215
240 cc	9,2 cm	4,9 cm	354-5240	RSZ-5240
270 cc	9,5 cm	5,0 cm	354-5270	RSZ-5270
295 cc	9,9 cm	5,2 cm	354-5295	RSZ-5295
320 cc	10,0 cm	5,3 cm	354-5320	RSZ-5320
350 cc	10,3 cm	5,4 cm	354-5350	RSZ-5350
375 cc	10,5 cm	5,5 cm	354-5375	RSZ-5375
400 cc	10,8 cm	5,6 cm	354-5400	RSZ-5400
430 cc	11,1 cm	5,8 cm	354-5430	RSZ-5430
455 cc	11,3 cm	5,9 cm	354-5455	RSZ-5455
480 cc	11,6 cm	6,0 cm	354-5480	RSZ-5480
535 cc	12,1 cm	6,3 cm	354-5535	RSZ-5535
590 cc	12,6 cm	6,5 cm	354-5590	RSZ-5590

Smooth Round Breast Implants,
Moderate Plus Profile,
Cohesive I™



Restorable
Gel Sizer

Volume	Diameter	Projection	Catalog #	Restorable Gel Sizer
125 cc	8,9 cm	2,8 cm	350-1251 BC	RSZ-1251
150 cc	9,5 cm	2,9 cm	350-1501 BC	RSZ-1501
175 cc	10,0 cm	3,1 cm	350-1751 BC	RSZ-1751
200 cc	10,5 cm	3,2 cm	350-2001 BC	RSZ-2001
225 cc	10,9 cm	3,3 cm	350-2251 BC	RSZ-2251
250 cc	11,3 cm	3,4 cm	350-2501 BC	RSZ-2501
275 cc	11,7 cm	3,5 cm	350-2751 BC	RSZ-2751
300 cc	12,0 cm	3,6 cm	350-3001 BC	RSZ-3001
325 cc	12,3 cm	3,8 cm	350-3251 BC	RSZ-3251
350 cc	12,5 cm	3,9 cm	350-3501 BC	RSZ-3501
375 cc	12,8 cm	4,0 cm	350-3751 BC	RSZ-3751
400 cc	13,1 cm	4,0 cm	350-4001 BC	RSZ-4001
450 cc	13,6 cm	4,2 cm	350-4501 BC	RSZ-4501
500 cc	14,1 cm	4,3 cm	350-5001 BC	RSZ-5001
550 cc	14,6 cm	4,5 cm	350-5501 BC	RSZ-5501
600 cc	15,0 cm	4,6 cm	350-6001 BC	RSZ-6001
700 cc	15,8 cm	4,9 cm	350-7001 BC	RSZ-7001
800 cc	16,5 cm	5,1 cm	350-8001 BC	RSZ-8001

Smooth Round Breast Implants,
High Profile,
Cohesive I™



Restorable
Gel Sizer

Volume	Diameter	Projection	Catalog #	Restorable Gel Sizer
125 cc	8,3 cm	3,5 cm	350-1254 BC	RSZ-1254
150 cc	8,8 cm	3,7 cm	350-1504 BC	RSZ-1504
175 cc	9,3 cm	3,9 cm	350-1754 BC	RSZ-1754
200 cc	9,7 cm	4,0 cm	350-2004 BC	RSZ-2004
225 cc	10,1 cm	4,2 cm	350-2254 BC	RSZ-2254
250 cc	10,5 cm	4,3 cm	350-2504 BC	RSZ-2504
275 cc	10,8 cm	4,4 cm	350-2754 BC	RSZ-2754
300 cc	11,1 cm	4,5 cm	350-3004 BC	RSZ-3004
325 cc	11,4 cm	4,6 cm	350-3254 BC	RSZ-3254
350 cc	11,7 cm	4,8 cm	350-3504 BC	RSZ-3504
375 cc	12,0 cm	4,8 cm	350-3754 BC	RSZ-3754
400 cc	12,2 cm	5,0 cm	350-4004 BC	RSZ-4004
425 cc	12,5 cm	5,0 cm	350-4254 BC	RSZ-4254
450 cc	12,8 cm	5,1 cm	350-4504 BC	RSZ-4504
500 cc	13,2 cm	5,3 cm	350-5004 BC	RSZ-5004
550 cc	13,6 cm	5,5 cm	350-5504 BC	RSZ-5504
600 cc	14,0 cm	5,6 cm	350-6004 BC	RSZ-6004
650 cc	14,4 cm	5,7 cm	350-6504 BC	RSZ-6504
700 cc	14,8 cm	5,8 cm	350-7004 BC	RSZ-7004
800 cc	15,5 cm	6,0 cm	350-8004 BC	RSZ-8004

Smooth Round Breast Implants,
Moderate Plus Profile Xtra
Cohesive I™



Restorable
Gel Sizer

Volume	Diameter	Projection	Catalog #	Lower Pole Arc A- B	Restorable Gel Sizer
130 cc	8,9 cm	3,1 cm	SMPX-130	6,6 cm	RSZ-MPX-130
160 cc	9,5 cm	3,3 cm	SMPX-160	6,9 cm	RSZ-MPX-160
190 cc	10 cm	3,4 cm	SMPX-190	7,3 cm	RSZ-MPX-190
215 cc	10,4 cm	3,6 cm	SMPX-215	7,5 cm	RSZ-MPX-215
240 cc	10,8 cm	3,7 cm	SMPX-240	7,8 cm	RSZ-MPX-240
270 cc	11,4 cm	3,8 cm	SMPX-270	8,1 cm	RSZ-MPX-270
295 cc	11,5 cm	4 cm	SMPX-295	8,3 cm	RSZ-MPX-295
325 cc	11,9 cm	4,1 cm	SMPX-325	8,5 cm	RSZ-MPX-325
350 cc	12,3 cm	4,1 cm	SMPX-350	8,7 cm	RSZ-MPX-350
370 cc	12,6 cm	4,1 cm	SMPX-370	8,9 cm	RSZ-MPX-370
405 cc	12,7 cm	4,4 cm	SMPX-405	9,1 cm	RSZ-MPX-405
440 cc	13,1 cm	4,5 cm	SMPX-440	9,3 cm	RSZ-MPX-440
490 cc	13,6 cm	4,7 cm	SMPX-490	9,7 cm	RSZ-MPX-490
545 cc	14 cm	4,9 cm	SMPX-545	10,0 cm	RSZ-MPX-545
605 cc	14,5 cm	5,1 cm	SMPX-605	10,3 cm	RSZ-MPX-605
645 cc	14,9 cm	5,1 cm	SMPX-645	10,6 cm	RSZ-MPX-645
755 cc	15,7 cm	5,4 cm	SMPX-755	11,1 cm	RSZ-MPX-755

Smooth Round Breast Implants,
High Profile Xtra
Cohesive I™



Restorable
Gel Sizer

Volume	Diameter	Projection	Catalog #	Lower Pole Arc A- B	Restorable Gel Sizer
150 cc	8,3 cm	4,1 cm	SHPX-150	6,9 cm	RSZ-SHPX-150
180 cc	8,8 cm	4,4 cm	SHPX-180	7,3 cm	RSZ-SHPX-180
200 cc	9,2 cm	4,5 cm	SHPX-200	7,6 cm	RSZ-SHPX-200
235 cc	9,5 cm	4,9 cm	SHPX-235	8,0 cm	RSZ-SHPX-235
260 cc	9,9 cm	5 cm	SHPX-260	8,2 cm	RSZ-SHPX-260
285 cc	10,3 cm	5 cm	SHPX-285	8,5 cm	RSZ-SHPX-285
335 cc	10,7 cm	5,4 cm	SHPX-335	8,8 cm	RSZ-SHPX-335
355 cc	11 cm	5,5 cm	SHPX-355	9,0 cm	RSZ-SHPX-355
380 cc	11,3 cm	5,5 cm	SHPX-380	9,2 cm	RSZ-SHPX-380
415 cc	11,5 cm	5,8 cm	SHPX-415	9,4 cm	RSZ-SHPX-415
450 cc	11,9 cm	5,9 cm	SHPX-450	9,6 cm	RSZ-SHPX-450
465 cc	12,1 cm	5,8 cm	SHPX-465	9,8 cm	RSZ-SHPX-465
490 cc	12,5 cm	5,8 cm	SHPX-490	10,0 cm	RSZ-SHPX-490
535 cc	12,7 cm	6 cm	SHPX-535	10,2 cm	RSZ-SHPX-535
595 cc	13,1 cm	6,3 cm	SHPX-595	10,5 cm	RSZ-SHPX-595
650 cc	13,5 cm	6,5 cm	SHPX-650	10,9 cm	RSZ-SHPX-650
700 cc	14,1 cm	6,5 cm	SHPX-700	11,2 cm	RSZ-SHPX-700
755 cc	14,4 cm	6,7 cm	SHPX-755	11,4 cm	RSZ-SHPX-755
790 cc	14,8 cm	6,7 cm	SHPX-790	11,7 cm	RSZ-SHPX-790

Smooth Round Breast Implants,
Ultra High Profile,
Cohesive I™



Volume	Diameter	Projection	Catalog #	Resterilizable Gel Sizer
135 cc	7,8 cm	4,1 cm	350-5135 BC	RSZ-5135
160 cc	8,2 cm	4,3 cm	350-5160 BC	RSZ-5160
185 cc	8,4 cm	4,4 cm	350-5185 BC	RSZ-5185
215 cc	8,7 cm	4,5 cm	350-5215 BC	RSZ-5215
240 cc	9,0 cm	4,7 cm	350-5240 BC	RSZ-5240
270 cc	9,3 cm	4,8 cm	350-5270 BC	RSZ-5270
295 cc	9,7 cm	5,0 cm	350-5295 BC	RSZ-5295
320 cc	9,8 cm	5,1 cm	350-5320 BC	RSZ-5320
350 cc	10,1 cm	5,2 cm	350-5350 BC	RSZ-5350
375 cc	10,4 cm	5,3 cm	350-5375 BC	RSZ-5375
400 cc	10,6 cm	5,4 cm	350-5400 BC	RSZ-5400
430 cc	10,9 cm	5,6 cm	350-5430 BC	RSZ-5430
455 cc	11,2 cm	5,7 cm	350-5455 BC	RSZ-5455
480 cc	11,4 cm	5,8 cm	350-5480 BC	RSZ-5480
535 cc	12,0 cm	6,1 cm	350-5535 BC	RSZ-5535
590 cc	12,5 cm	6,3 cm	350-5590 BC	RSZ-5590

SILTEX® Round Breast Implants,
Moderate Plus Profile,
Cohesive II™

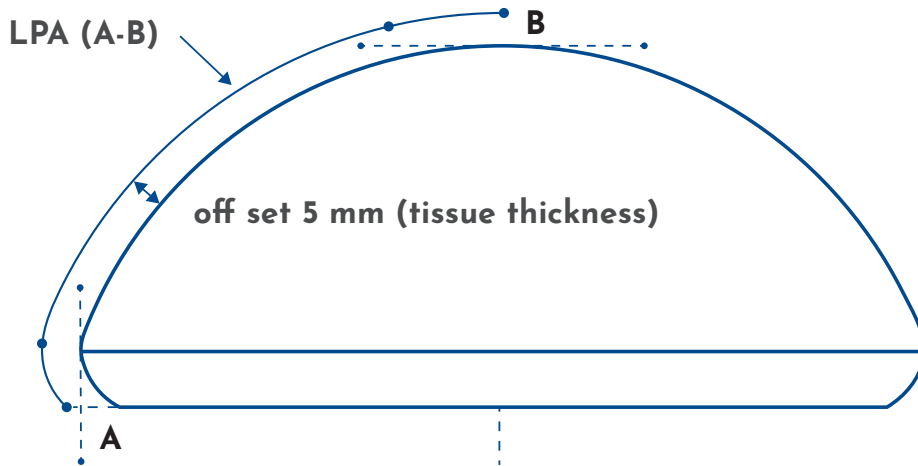


Volume	Diameter	Projection	Catalog #	Resterilizable Gel Sizer
125 cc	8,8 cm	2,9 cm	324-5125	RSZ-1251
150 cc	9,4 cm	3,0 cm	324-5150	RSZ-1501
175 cc	10,0 cm	3,2 cm	324-5175	RSZ-1751
200 cc	10,5 cm	3,3 cm	324-5200	RSZ-2001
225 cc	10,9 cm	3,5 cm	324-5225	RSZ-2251
250 cc	11,3 cm	3,6 cm	324-5250	RSZ-2501
275 cc	11,7 cm	3,7 cm	324-5275	RSZ-2751
300 cc	12,0 cm	3,7 cm	324-5300	RSZ-3001
325 cc	12,3 cm	3,8 cm	324-5325	RSZ-3251
350 cc	12,6 cm	3,8 cm	324-5350	RSZ-3501
375 cc	12,9 cm	3,9 cm	324-5375	RSZ-3751
400 cc	13,2 cm	4,0 cm	324-5400	RSZ-4001
450 cc	13,7 cm	4,1 cm	324-5450	RSZ-4501
500 cc	14,1 cm	4,2 cm	324-5500	RSZ-5001
550 cc	14,4 cm	4,4 cm	324-5550	RSZ-5501
600 cc	14,7 cm	4,5 cm	324-5600	RSZ-6001
700 cc	15,7 cm	4,8 cm	324-5700	RSZ-7001
800 cc	16,6 cm	5,0 cm	324-5800	RSZ-8001

SILTEX® Round Breast Implants,
High Profile,
Cohesive II™



Volume	Diameter	Projection	Catalog #	Resterilizable Gel Sizer
125 cc	8,4 cm	3,6 cm	324-4125	RSZ-1254
150 cc	8,9 cm	3,8 cm	324-4150	RSZ-1504
175 cc	9,4 cm	4,0 cm	324-4175	RSZ-1754
200 cc	9,9 cm	4,1 cm	324-4200	RSZ-2004
225 cc	10,2 cm	4,3 cm	324-4225	RSZ-2254
250 cc	10,5 cm	4,5 cm	324-4250	RSZ-2504
275 cc	10,9 cm	4,6 cm	324-4275	RSZ-2754
300 cc	11,1 cm	4,7 cm	324-4300	RSZ-3004
325 cc	11,5 cm	4,8 cm	324-4325	RSZ-3254
350 cc	11,7 cm	4,9 cm	324-4350	RSZ-3504
375 cc	12,0 cm	5,0 cm	324-4375	RSZ-3754
400 cc	12,3 cm	5,1 cm	324-4400	RSZ-4004
425 cc	12,5 cm	5,2 cm	324-4425	RSZ-4254
450 cc	12,7 cm	5,2 cm	324-4450	RSZ-4504
500 cc	13,2 cm	5,4 cm	324-4500	RSZ-5004
550 cc	13,5 cm	5,6 cm	324-4550	RSZ-5504
600 cc	14,0 cm	5,7 cm	324-4600	RSZ-6004
650 cc	14,3 cm	5,8 cm	324-4650	RSZ-6504
700 cc	14,7 cm	6,0 cm	324-4700	RSZ-7004
800 cc	15,4 cm	6,3 cm	324-4800	RSZ-8004

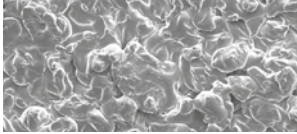


SILTEX® TEXTURE

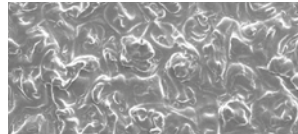
All MENTOR® SILTEX® Breast Implants are microtexture.* SILTEX® Microtexture uses an imprinting process that is designed to help keep implants in place.*¹²

A closer look at MENTOR® patented SILTEX® Texture

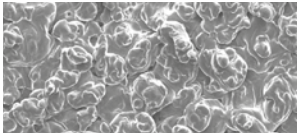
SEM images of SILTEX® Texture



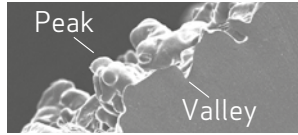
Anterior View



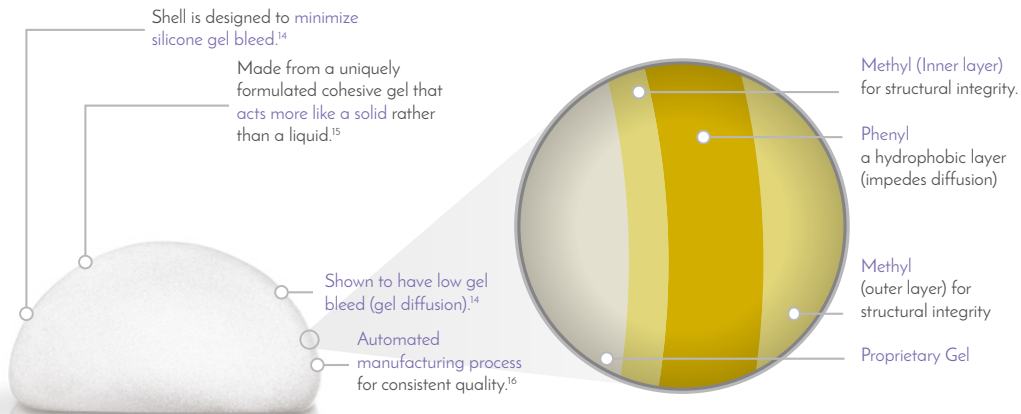
Radius View



Posterior View



Cross Section



* according to ISO 14607

Soft where you *want* it
Firm where you need it



Mentor® Breast Implants are backed by a highly comprehensive warranty¹⁷

Mentor Warranties & Product Replacement Policy

IMENTOR Promise

MENTOR Promise Protection Plan Overview¹⁷



FREE AND AUTOMATIC ENROLLMENT



FREE LIFETIME PRODUCT REPLACEMENT FOR RUPTURE*



UPTO €1000 FINANCIAL ASSISTANCE COVERAGE FOR RUPTURE†



FREE PRODUCT REPLACEMENT IN THE EVENTS OF CAPSULAR CONTRACTURE (Baker III/IV), DOUBLE CAPSULE AND LATE STAGE SEROMA‡



FREE CONTRALATERAL IMPLANT at your surgeon's request



Global Brand for Breast Implants¹



At MENTOR we put patient safety as our number one priority¹⁶



MENTOR® MemoryGel® Breast Implants provide long-lasting patient satisfaction¹⁰

^v Based on patient survey at 10 years in the Mentor® MemoryGel® Breast Implant 10-Year Core Gel Clinical Study Final Report.

* In the event of a confirmed rupture or deflation (leaking) of any MENTOR® Breast Implant due to wear or delamination requiring surgical intervention, regardless of the age of the implant, Mentor will provide a free replacement of a MENTOR® Breast Implant of any size in the same or similar style as the originally implanted product.

† When a replacement surgery of a MENTOR® Gel-Filled Breast Implant is required due to confirmed rupture occurs within ten (10) years from the date of implantation, provided that eligibility is proven and confirmed by Mentor based on its assessment and evaluation, Mentor will pay uninsured, out-of-pocket costs for operating room, anesthesia and/or surgical expenses directly related to revision surgery up to a maximum aggregate amount of €1000. Operating room and anesthesia charges shall be given payment priority. In such cases, the request for financial assistance under the Mentor Promise Protection Plan must be made to your surgeon. Financial assistance does not imply a loan to you.

‡ In the events of capsular contracture (Baker III/IV), double capsule or late-stage seroma in augmentation surgery of a MENTOR® Gel-Filled Breast Implant, Mentor will provide a replacement of a MENTOR® Gel-Filled Breast Implant, free of charge for the period of ten (10) years from the date of implantation, provided that eligibility is proven and confirmed by Mentor based on its evaluation of explanted product and assessment of all required documentation. Mentor will provide a replacement MENTOR® Product of any size in the same or similar style as the originally implanted product.

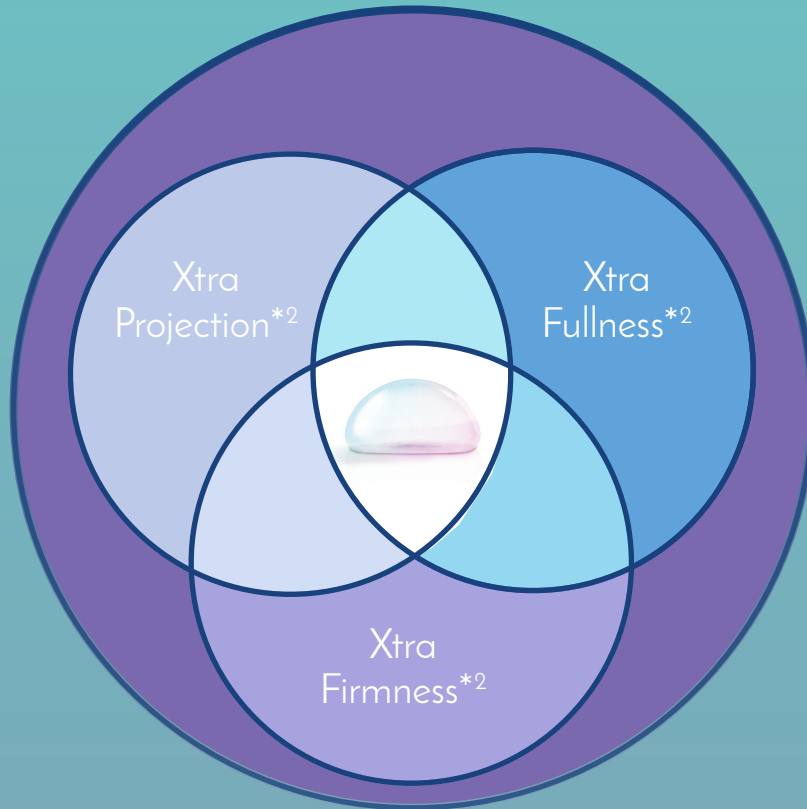
For further information, talk to your Mentor Sales Representative or visit mentorwllc.eu.

1. Mentor Worldwide LLC. Mentor Worldwide Expander and Share Sales Data through Q2 2020. 2. Product Dimensions for MemoryGel and MemoryGel Xtra Breast Implants Mentor R&D Compression Benchtop Testing July 2017. 3. Bondurant, S., Ernster, V., and Herdman, R. Safety of Silicone Implant. Washington, DC: National Academy Press. 1999. 32. Mentor Worldwide LLC. Mentor Worldwide Historical Implant Data Jun 2018. Jan 2020. January 2020. 4. Allegan Natrelle Inspira Product Catalog 2017, Motiva Product Catalog 2017, Polytech Product Catalog 2016. 5. Spear, S., Jespersen, MR. Breast Implants: Saline or Silicone? Aesthetic Surgery Journal. 2010; 30:557-52. Bondurant, S., Ernster, V., and Herdman, R. "Safety of Silicone Implants." Washington, DC: National Academy Press(1999) Page 58. 6. Mentor R&D Benchtop Testing (Pinch Test) July 2017. 7. Mentor Consumer Preference Market Research Report July 2017. 8. Mentor Surgeon Preference Market Research Report July 2017. 9. Mentor WW Historical Implant Data 1985- 2020 Jan. 10. Mentor Worldwide LLC. MemoryGel® Core Gel Clinical Study Final Report, April 2015, p67, para 5.3.3. 11. Summary of the Safety and Effectiveness of Mentor's MemoryGel® Silicone Gel Filled Implants in Patients who are Undergoing Primary Breast Augmentation, Primary Breast Reconstruction, or Revision. 10 Year Core Gel Final Clinical Study Report. April 2015. 11.2. MemoryGel® Post Approval Study Seventh Annual Report, November 5, 2013. 11.3. Adjunct Study Final Report for Mentor's MemoryGel® Silicone Gel Filled Breast Implants, 02 November 2012. 11.4. Mentor Worldwide, LLC. MemoryShape™ Post Approval Cohort Study (formerly Contour Profile Gel Core Study) Final Clinical Study Report, 02 June 2015. 11.5. Mentor Becker Expander/ Breast Implant Clinical Trial 2013 Annual Report, 11.6. Adjunct Study Annual Report for Mentor's Becker Adjustable Breast Implants. Year 18 (September 1992- November 2010) October 3, 2011. 11.7. CPG Styles Study: A Study of the Safety of the Contour Profile Gel Breast Implants in Subjects who are Undergoing Primary Breast Augmentation, Primary Breast Reconstruction, or Revision. 2015. 11.8. MemoryShape™ Post Approval Continued Access Study (formerly Contour Profile Gel Continued Access Study). 2014. 11.9. Athena Study annual report (Sept 2018). 12. A Study of the Safety and Effectiveness of the Mentor® Smooth and Textured Larger Size MemoryGel® Ultra High Profile (UHP L) Breast Implants in Subjects who are Undergoing Primary Breast Reconstruction or Revision. Reconstruction. 1110. Glow Study annual report (Feb 2018). Memory Gel and Shape Combined Cohort Post Approval Study, 12. Wikstrom R, Gorali V, Leopold J, Canody J. Device Specific Findings of Imprinted Texture 2019. 1-7 Breast Implants: Characteristics, Risks, and Benefits. 13. Danino, A. M., Bosmaoglu, P., Saito, S., Rocher, F., Blanchet Bardou, C., Revail, M., & Servant, J. M. (2001). Comparison of the capsular response to the Biocell RTV and Mentor 1600 Siltex breast implant surface texturing: a scanning electron microscopic study. Plastic and reconstructive surgery, 108(7), 2047-2052. 14. FDA. Summary of Safety and Effectiveness Data: Mentor MemoryGel® Silicone Gel Filled Breast Implants. P030053. Recommended April 13, 2005. Notice of Approval November 17, 2006. <http://www.accessdata.fda.gov/scripts/cdrh/cdoci/oc/pma/crm?id=p030053>. Accessed 23/11/2020. 15. MENTOR Worldwide LLC. PROC-400623 152. MENTOR Worldwide LLC. HS72-02114.06, HS72-010308.02, HS72-010514.01 15.3. Email J. Lambert VP NuSil Technology. Dated 11/15/2018. 16. Mentor Worldwide LLC. FDA. Customer Letter--Final Mentor Worldwide LLC. TX820-130420-01 17. MENTOR PROMISE PROTECTION PLAN FOR MENTOR® BREAST IMPLANTS, Legal Document, 2021.

IMPORTANT SAFETY INFORMATION:

MENTOR® MemoryGel® Breast Implants are indicated for breast augmentation, in women who are at least 18 years old, or for breast reconstruction. Breast implant surgery should not be performed in those women with active infection anywhere in their body; those with existing cancer or pre-cancer of their breast(s); those who have not received adequate treatment for these conditions or those who are pregnant or nursing. There are risks associated with breast implant surgery. Breast implants are not lifetime devices and breast implantation are not necessarily a one-time surgery. The most common complications with MENTOR® MemoryGel® Breast Implants include re-operation, implant removal, capsular contracture, asymmetry, and breast pain. A lower risk of complication is implant rupture, which is most often silent. The health consequences of a ruptured silicone gel-filled breast implant have not been fully established. Screenings such as mammography, MRI, or ultrasound are recommended after initial implant surgery to assist in detecting implant rupture. Breast implants are also associated with the risk of breast implant-associated anaplastic large cell lymphoma (BIA-ALCL), an uncommon type of lymphoma. An individual's risk of developing BIA-ALCL with MENTOR® Breast Implants is low based on the data currently available on the incidence of worldwide cases. Your patient needs to be informed and understand the risks and benefits of breast implants, and she should be provided with an opportunity to consult with you prior to deciding on surgery. For detailed indications, contraindications, warnings and precautions associated with the use of all MENTOR® Implantable Devices, please refer to the Product Insert Data Sheet provided with each product or review the Important Safety Information provided at www.mentorwllc.eu. MENTOR® CONTOUR PROFILE™ Breast Tissue Expanders are used for breast reconstruction after mastectomy, correction of an underdeveloped breast, scar revision, and tissue defect procedures. The expander is intended for temporary subcutaneous or submuscular implantation; they should be used within a time frame determined by the physician to achieve the clinically desired degree of tissue expansion. MENTOR® CONTOUR PROFILE™ Tissue Expanders include magnetic injection domes, which contain a rare earth permanent magnet, and are NOT MRI compatible. The device could be moved by the MRI causing pain or displacement, potentially resulting in a revision surgery. Do not use the MENTOR® CONTOUR PROFILE™ Tissue Expander in patients where an MRI may be needed. DO NOT use the MENTOR® CONTOUR PROFILE™ Tissue Expander in patients that have a previously implanted device such as pacemakers, drug infusion devices, artificial lensing devices, etc. that could be affected by a magnetic field. MENTOR® has not tested the in vivo effects of radiation therapy with MENTOR® CONTOUR PROFILE™ Expander devices and cannot warrant the safety of such use. The incidence of extrusion of the expander has been shown to increase when the expander has been placed in injured areas; scarred, heavily irradiated or burned tissue; crushed bone areas, where severe surgical reduction of the area has previously been performed and where steroids are used in the surgical pocket. Your patient needs to be informed and understand the risks and benefits of breast implants and tissue expanders, and she should be provided with an opportunity to consult with you prior to deciding on surgery. For detailed indications, contraindications, warnings and precautions associated with the use of all MENTOR® Implantable Devices, please refer to the Product Insert Data Sheet provided with each product or review the Important Safety Information provided at www.mentorwllc.eu.

Why MENTOR® MemoryGel® Xtra Breast Implants?



* Product Dimensions for MemoryGel and MemoryGel Xtra Breast Implants Mentor R&D Compression Benchtop Testing - July 2017.

This publication is not intended for distribution outside of the EMEA region. The third-party trademarks used herein are the trademarks of the respective owners.

© Mentor Worldwide LLC 2022 090539-220217 EMEA

MENTOR Medical System BV, Zernikedreef 2, 2333 CL Leiden, The Netherlands, www.mentorwllc.eu