

DERMACLOSE

Continuous External Tissue Expander

GEM
Global Excellence in Microsurgery



Expand your clinical options

Close wounds in days, not weeks

Use DermaClose as an alternative to:

- ✓ Skin grafts
- ✓ Complicated flaps
- ✓ Prolonged secondary healing
- ✓ Donor site closure

Use DermaClose to assist with:

- ✓ Split thickness skin grafts
- ✓ High tension closures
- ✓ Delayed primary closure and wound size reduction
- ✓ Offloading of suture tension



Indications for Use: The DermaClose Continuous External Tissue Expander is indicated for use in reducing or assisting with the closure of full-thickness wounds of the skin.

Contraindications: The DermaClose Continuous External Tissue Expander should not be used on ischemic or infected tissue. It should not be used on fragile tissue at the edges of a wound.

DermaClose reduces time to closure with no need to re-tighten or readjust



- A constant and controlled force of 1.2 kg provides rapid tissue movement
- Use multiple devices on larger wounds
- Easy to apply and remove

Your challenge. Our solution.



40 cm x 12 cm ALT donor flap wound, showing DermaClose skin anchors starting to be applied.



Sequential application of two DermaClose devices, beginning at the end of the wounds and progressing centrally.

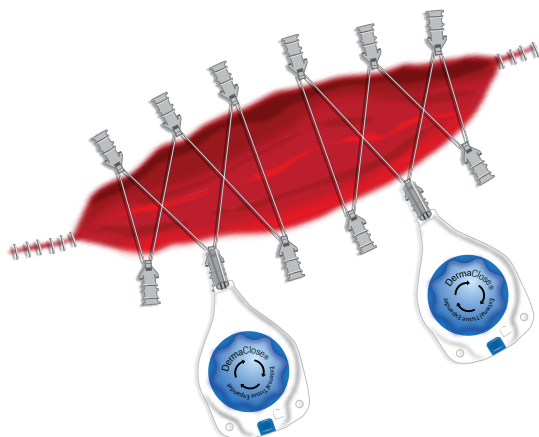


Completely closed wound as it appeared immediately after application of DermaClose and sutures.



Follow-up at 5 weeks shows a wound that is healing well.

A typical DermaClose case: DermaClose used in primary closure of large anterolateral thigh donor site defect.



17,000 cases.
46 published
case reports.
20 clinical
publications.