

# TTFM Probe Application Guide & Product List

Medistim's QuickFit™ and Vascular probes utilize transit time flow measurement (TTFM) technology to accurately measure volumetric blood flow intraoperatively. Medistim technology is frequently used in cardiac, vascular and transplant surgical applications.



# Reliable, proven technology for best possible surgical outcomes

Together with Medistim's systems, the QuickFit™ and Vascular TTFM probes offer fast, accurate and reproducible measurements. Having functional information about a graft is key to verifying graft patency and function. The ultimate benefit is quality assurance with immediate feedback that can lead to improved surgical outcomes.

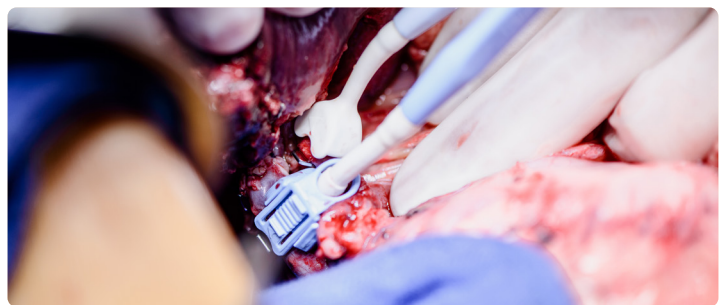
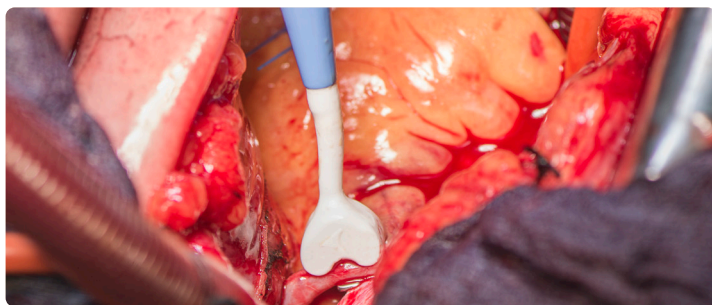
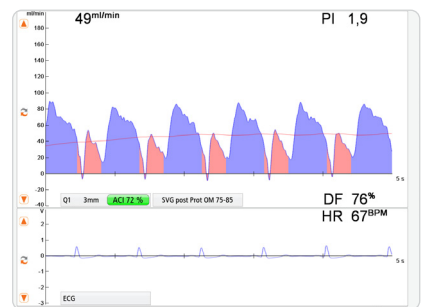
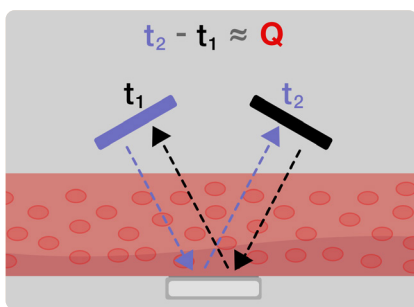
## Medistim QuickFit™ TTFM Probes

The QuickFit™ design securely holds the vessel and ensures precise measurements on all types of vessel grafts.



## Medistim Vascular TTFM Probes

The Vascular probe features a locking slide mechanism designed to secure the vessel while minimizing the manipulation of fragile or calcified vessels.



# TTFM Probe Application and Size Guide

## Cardiac Surgery

Surgery/Vessel	Vessel Size (mm)	Recommended Medistim probes
Saphenous Vein Graft	3-6	3, 4, 5 and 6mm Medistim TTFM probes (PS or PV probe series)
Internal Mammary Artery	1.5-3	1.5, 2 and 3mm Medistim TTFM probes (PS or PV probe series)
Radial Artery	2-4	2, 3, and 4mm Medistim TTFM probes (PS or PV probe series)
Pediatric Surgery	1.5-16	1.5 - 16mm Medistim TTFM probes (PS or PV probe series)

## Transplant Surgery

Surgery/Vessel	Vessel Size (mm)	Recommended Medistim probes
Hepatic Artery	4-8	4, 5, 6, 7, and 8mm Medistim TTFM probes (PS or PV probe series)
Portal Vein	10-14	10, 12, and 14mm Medistim TTFM probes (PV probe series)
Renal Artery	4-6	4, 5, and 6mm Medistim TTFM probes (PS or PV probe series)
Renal Vein	8-11	8, 10, and 12mm Medistim TTFM probes (PV probe series)
Common Iliac Artery	6-8	6, 7, and 8mm Medistim TTFM probes (PS or PV probe series)

## Vascular Surgery

Surgery/Vessel	Vessel Size (mm)	Recommended Medistim probes
Common Carotid Artery	6-9	6, 7, 8, and 10mm Medistim TTFM probes (PS or PV probe series)
Internal Carotid Artery	4-6	4, 5, and 6mm Medistim TTFM probes (PS or PV probe series)
External Carotid Artery	4-6	4, 5, and 6mm Medistim TTFM probes (PS or PV probe series)
Common Femoral Artery	8-11	8, 10, and 12mm Medistim TTFM probes (PV probe series)
Popliteal Artery	3-6	3, 4, 5, and 6mm Medistim TTFM probes (PS or PV probe series)
Tibial Artery	3-4	3 and 4mm Medistim TTFM probes (PS or PV probe series)
Saphenous Vein	3-6	3, 4, 5, and 6mm Medistim TTFM probes (PS or PV probe series)
Renal Bypass	4-6	4, 5, and 6mm Medistim TTFM probes (PS or PV probe series)
Radial Artery	2-4	2, 3, and 4mm Medistim TTFM probes (PS or PV probe series)
Brachial Artery	3-4	3 and 4mm Medistim TTFM probes (PS or PV probe series)

Medistim QuickFit™ and Vascular TTFM probes are designed to meet worldwide sterilization standards and are approved for most commercial sterilization methods and technologies.

### Medistim QuickFit™ TTFM Probes - (PS Probe Series)



Probe sizes (mm)	Part numbers w/o handle*	Part numbers w/ handle*
1.5	PS101011	PS101012
2	PS100021	PS100022
3	PS100031	PS100032
4	PS100041	PS100042
5	PS100051	PS100052
7	PS100071	PS100072

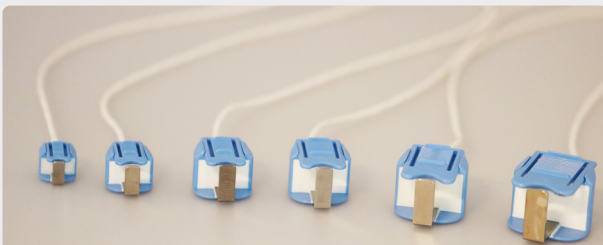
\*Part numbers that end with 1 indicate probes without handle and part numbers that end with 2 indicate probes with handle.



### Medistim Vascular TTFM Probes - (PV Probe Series)



Probe sizes (mm)	Part numbers w/o handle*	Part numbers w/ handle*
1.5	PV101011	-
2	PV100021	-
3	PV100031	PV100032
4	PV100041	PV100042
5	PV100051	PV100052
6	PV100061	PV100062
8	PV100081	PV100082
10	PV100101	PV100102
12	PV100121	PV100122
14	PV100141	PV100142
16	PV100161	PV100162



\*Part numbers that end with 1 indicate probes without handle and part numbers that end with 2 indicate probes with handle

All products mentioned in this brochure are in compliance with the European Medical Device Directive 93/42/EEC. Please refer to the User Manual for indications, contraindications, warnings, precautions, and further specifications and descriptions. Specifications may be changed without notice. For a list of flow probes for other applications, contact your Medistim representative.

FDA 510(k) cleared no. K102595  
 FDA 510(k) cleared no. K040228

