

#1  
GLOBAL  
BRAND<sup>10</sup>

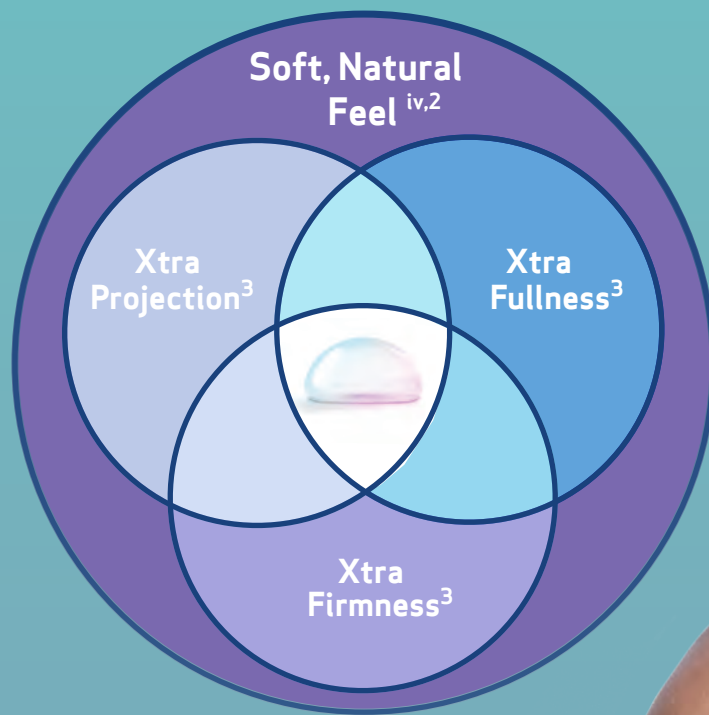
MENTOR<sup>®</sup>  
MemoryGel<sup>™</sup>  
Breast Implants

PROVEN  
WITH  
 MENTOR<sup>®</sup>  
PART OF THE Johnson & Johnson FAMILY OF COMPANIES

Own  
The Day



# Why MENTOR® MemoryGel™ Xtra Breast Implants? <sup>1</sup>



iv. In-person consumer survey with 452 respondents



# The Soft, Natural Feel Your Patients Desire,<sup>iv</sup> Now with:

## Xtra Projection<sup>3</sup>

More projecting than 90%  
of corresponding Natrelle®  
Inspira profiles by base  
width.<sup>v,6</sup>

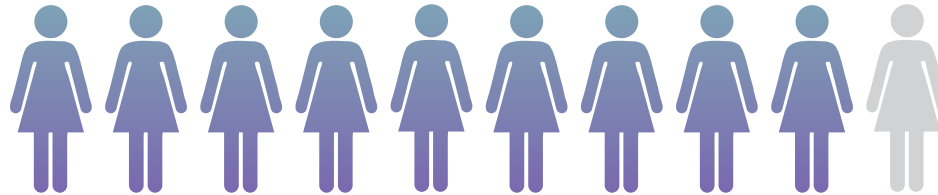
## Xtra Fullness<sup>3</sup>

Precision-filled with  
Mentor's proprietary  
cohesive MemoryGel™

## Xtra Firmness<sup>3</sup>

Comparable firmness against Natrelle®  
Inspira Breast Implants. <sup>#4</sup>

(30% higher tensile strength versus  
Natrelle Inspira Breast Implant shells)<sup>§5</sup>



## Women Prefer MemoryGel™ Xtra

Chosen by 9 out of 10 patients in a blinded comparison as feeling more  
like natural breast than another manufacturer.<sup>7</sup>



In a blinded comparison, surgeons chose  
MemoryGel™ Xtra Breast Implants more  
than another manufacturer.<sup>8</sup>

v. Published projection dimensions were compared between MemoryGel™ Xtra Moderate Plus Profile vs. Inspira Moderate Profile and MemoryGel™ Xtra High Profile vs. Inspira Full Profile

iv. In-person consumer survey with 452 respondents

vi. Head-to-head blinded in-person tabletop product comparison (MemoryGel™ Xtra vs. Inspira Responsive vs. Inspira Cohesive) with 452 respondents.  
head-to-head in-person tabletop product comparison (MemoryGel™ Xtra vs. Inspira Responsive vs. Inspira Cohesive) with 79 surgeons.

‡ As compared to MemoryGel® Xtra Breast Implants.

§ Head-to-head compression benchtop testing between MemoryGel® Xtra (n=4) and Natrelle Inspira (n=3). Head-to-head testing according to industry standard ASTM D412 test method for rubber properties in tension (v. 0901) between MemoryGel® (n=10) and Natrelle Inspira (n=10).

**#1 GLOBAL  
BRAND**<sup>10</sup>

---

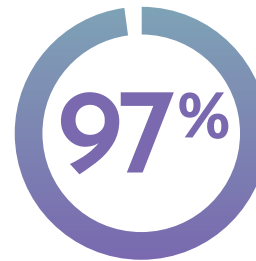
Successfully used  
and trusted for  
more than

**30** YRS

---

**5** MILLION +  
women have MENTOR®  
Silicone Gel Breast Implants

Unsurpassed Satisfaction<sup>viii,9</sup>



Primary  
Augmentation



Primary  
Reconstruction

Patients HIGHLY SATISFIED  
with their implant decision.

---



**190,000**  
WOMEN<sup>11-18</sup>

---

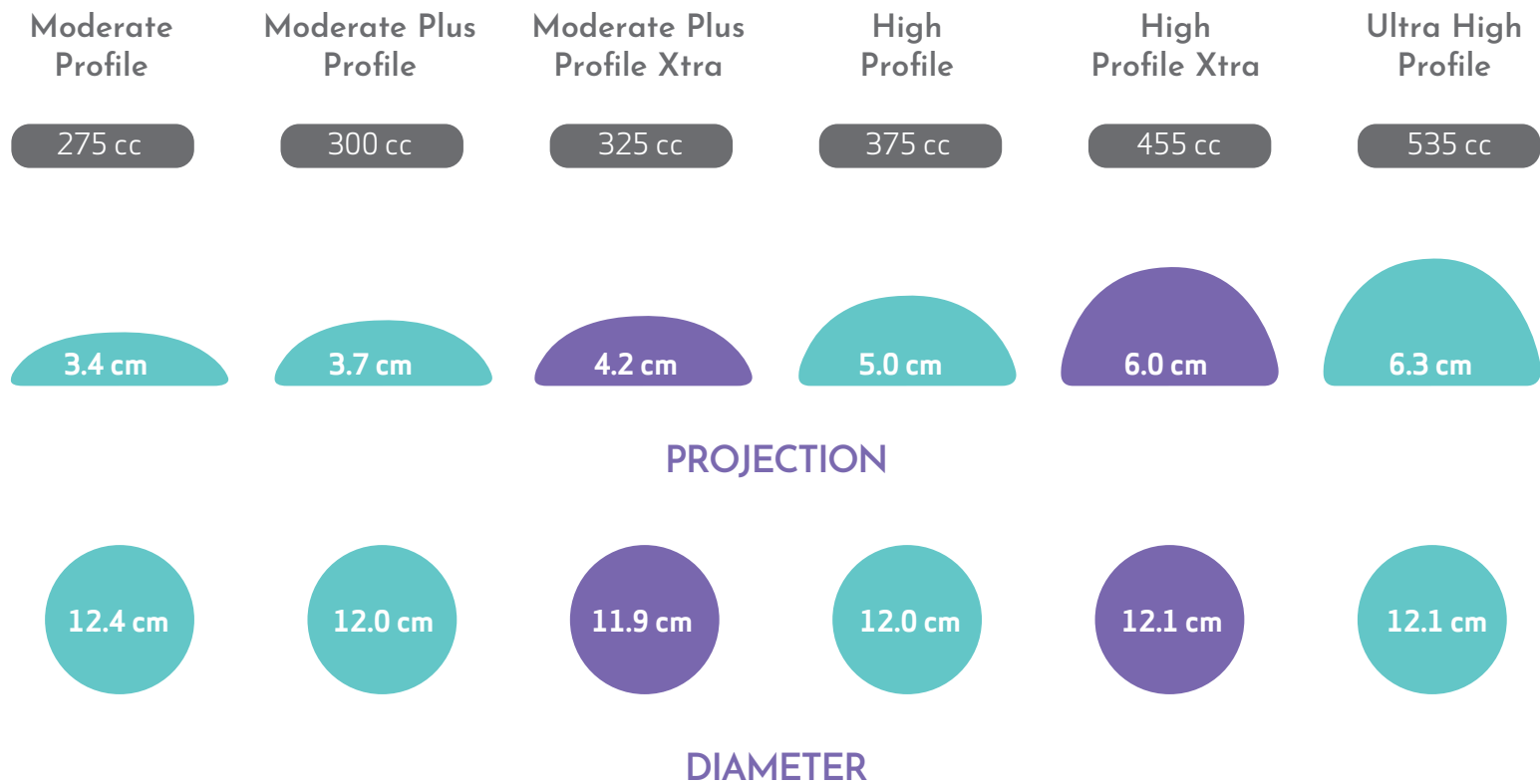
**7** CLINICAL  
STUDIES<sup>11-18</sup>

viii. Based on patient survey at 10 years in the MENTOR® MemoryGel™ Breast Implant 10-Year Core Gel Clinical Study Final Report.

# The Simplicity of Choice

Easily Select the Breast Implant Which Best Serves a Broad Spectrum of Unique Patient Journeys

MENTOR® MemoryGel™ SILTEX™ Imprinted Texture



SILTEX™ Round Breast Implants,  
Moderate Profile,  
Cohesive I™



Resterilizable  
Gel Sizer\*

Volume	Diameter	Projection	Catalog #	Resterilizable Gel Sizer*
100 cc	8,8 cm	2,5 cm	354-1007	RSZ-7100
125 cc	9,3 cm	2,8 cm	354-1257	RSZ-7125
150 cc	10,2 cm	2,7 cm	354-1507	RSZ-7150
175 cc	10,7 cm	2,8 cm	354-1757	RSZ-7175
200 cc	11,2 cm	2,8 cm	354-2007	RSZ-7200
225 cc	11,4 cm	3,0 cm	354-2257	RSZ-7225
250 cc	11,5 cm	3,3 cm	354-2507	RSZ-7250
275 cc	12,4 cm	3,4 cm	354-2757	RSZ-7275
300 cc	12,6 cm	3,5 cm	354-3007	RSZ-7300
325 cc	12,9 cm	3,6 cm	354-3257	RSZ-7325
350 cc	13,4 cm	3,7 cm	354-3507	RSZ-7350
375 cc	13,4 cm	3,8 cm	354-3757	RSZ-7375
400 cc	13,5 cm	3,9 cm	354-4007	RSZ-7400
450 cc	13,9 cm	4,1 cm	354-4507	RSZ-7450
500 cc	14,2 cm	4,3 cm	354-5007	RSZ-7500
550 cc	14,8 cm	4,4 cm	354-5507	RSZ-7550
600 cc	15,4 cm	4,5 cm	354-6007	RSZ-7600
700 cc	16,8 cm	4,3 cm	354-7007	RSZ-7700
800 cc	17,2 cm	4,6 cm	354-8007	RSZ-7800

SILTEX™ Round Breast Implants,  
Moderate Plus Profile,  
Cohesive I™



Resterilizable  
Gel Sizer\*

Volume	Diameter	Projection	Catalog #	Resterilizable Gel Sizer*
100 cc	8,1 cm	2,7 cm	354-1001	RSZ-1001
125 cc	8,8 cm	2,9 cm	354-1251	RSZ-1251
150 cc	9,4 cm	3,0 cm	354-1501	RSZ-1501
175 cc	10,0 cm	3,2 cm	354-1751	RSZ-1751
200 cc	10,5 cm	3,3 cm	354-2001	RSZ-2001
225 cc	10,9 cm	3,5 cm	354-2251	RSZ-2251
250 cc	11,3 cm	3,6 cm	354-2501	RSZ-2501
275 cc	11,7 cm	3,7 cm	354-2751	RSZ-2751
300 cc	12,0 cm	3,7 cm	354-3001	RSZ-3001
325 cc	12,3 cm	3,8 cm	354-3251	RSZ-3251
350 cc	12,6 cm	3,8 cm	354-3501	RSZ-3501
375 cc	12,9 cm	3,9 cm	354-3751	RSZ-3751
400 cc	13,2 cm	4,0 cm	354-4001	RSZ-4001
450 cc	13,7 cm	4,1 cm	354-4501	RSZ-4501
500 cc	14,1 cm	4,2 cm	354-5001	RSZ-5001
550 cc	14,4 cm	4,4 cm	354-5501	RSZ-5501
600 cc	14,7 cm	4,5 cm	354-6001	RSZ-6001
700 cc	15,7 cm	4,8 cm	354-7001	RSZ-7001
800 cc	16,6 cm	5,0 cm	354-8001	RSZ-8001

SILTEX™ Round Breast Implants,  
Moderate Plus Profile Xtra



Resterilizable  
Gel Sizer\*

Volume	Diameter	Projection	Catalog #	Resterilizable Gel Sizer*
130 cc	9,1 cm	3,1 cm	TMPX-130	RSZ-MPX-130
160 cc	9,5 cm	3,3 cm	TMPX-160	RSZ-MPX-160
190 cc	10,1 cm	3,5 cm	TMPX-190	RSZ-MPX-190
215 cc	10,5 cm	3,6 cm	TMPX-215	RSZ-MPX-215
240 cc	10,9 cm	3,8 cm	TMPX-240	RSZ-MPX-240
270 cc	11,4 cm	3,9 cm	TMPX-270	RSZ-MPX-270
295 cc	11,6 cm	4,1 cm	TMPX-295	RSZ-MPX-295
325 cc	11,9 cm	4,2 cm	TMPX-325	RSZ-MPX-325
350 cc	12,2 cm	4,3 cm	TMPX-350	RSZ-MPX-350
370 cc	12,7 cm	4,3 cm	TMPX-370	RSZ-MPX-370
405 cc	12,8 cm	4,5 cm	TMPX-405	RSZ-MPX-405
440 cc	13,1 cm	4,8 cm	TMPX-440	RSZ-MPX-440
490 cc	13,6 cm	4,8 cm	TMPX-490	RSZ-MPX-490
545 cc	14,1 cm	5 cm	TMPX-545	RSZ-MPX-545
605 cc	14,4 cm	5,3 cm	TMPX-605	RSZ-MPX-605
645 cc	15 cm	5,3 cm	TMPX-645	RSZ-MPX-645
755 cc	15,7 cm	5,6 cm	TMPX-755	RSZ-MPX-755

SILTEX™ Round Breast Implants,  
High Profile,  
Cohesive I™



Resterilizable  
Gel Sizer\*

Volume	Diameter	Projection	Catalog #	Resterilizable Gel Sizer*
125 cc	8,4 cm	3,6 cm	354-4125	RSZ-1254
150 cc	8,9 cm	3,8 cm	354-4150	RSZ-1504
175 cc	9,4 cm	4,0 cm	354-4175	RSZ-1754
200 cc	9,9 cm	4,1 cm	354-4200	RSZ-2004
225 cc	10,2 cm	4,3 cm	354-4225	RSZ-2254
250 cc	10,5 cm	4,5 cm	354-4250	RSZ-2504
275 cc	10,9 cm	4,6 cm	354-4275	RSZ-2754
300 cc	11,1 cm	4,7 cm	354-4300	RSZ-3004
325 cc	11,5 cm	4,8 cm	354-4325	RSZ-3254
350 cc	11,7 cm	4,9 cm	354-4350	RSZ-3504
375 cc	12,0 cm	5,0 cm	354-4375	RSZ-3754
400 cc	12,3 cm	5,1 cm	354-4400	RSZ-4004
425 cc	12,5 cm	5,2 cm	354-4425	RSZ-4254
450 cc	12,7 cm	5,2 cm	354-4450	RSZ-4504
500 cc	13,2 cm	5,4 cm	354-4500	RSZ-5004
550 cc	13,5 cm	5,6 cm	354-4550	RSZ-5504
600 cc	14,0 cm	5,7 cm	354-4600	RSZ-6004
650 cc	14,3 cm	5,8 cm	354-4650	RSZ-6504
700 cc	14,7 cm	6,0 cm	354-4700	RSZ-7004
800 cc	15,4 cm	6,3 cm	354-4800	RSZ-8004

SILTEX™ Round Breast Implants,  
High Profile Xtra



Resterilizable  
Gel Sizer\*

Volume	Diameter	Projection	Catalog #	Resterilizable Gel Sizer*
150 cc	8,4 cm	4,2 cm	THPX-150	RSZ-THPX-150
175 cc	9 cm	4,4 cm	THPX-175	RSZ-THPX-175
200 cc	9,4 cm	4,5 cm	THPX-200	RSZ-THPX-200
230 cc	9,8 cm	4,8 cm	THPX-230	RSZ-THPX-230
255 cc	10,1 cm	4,9 cm	THPX-255	RSZ-THPX-255
285 cc	10,5 cm	5,1 cm	THPX-285	RSZ-THPX-285
325 cc	10,8 cm	5,4 cm	THPX-325	RSZ-THPX-325
340 cc	11,1 cm	5,4 cm	THPX-340	RSZ-THPX-340
365 cc	11,4 cm	5,5 cm	THPX-365	RSZ-THPX-365
405 cc	11,6 cm	5,9 cm	THPX-405	RSZ-THPX-405
425 cc	11,9 cm	5,8 cm	THPX-425	RSZ-THPX-425
455 cc	12,1 cm	6 cm	THPX-455	RSZ-THPX-455
470 cc	12,3 cm	5,9 cm	THPX-470	RSZ-THPX-470
515 cc	12,6 cm	6,2 cm	THPX-515	RSZ-THPX-515
570 cc	13,2 cm	6,3 cm	THPX-570	RSZ-THPX-570
620 cc	13,4 cm	6,5 cm	THPX-620	RSZ-THPX-620
680 cc	14 cm	6,6 cm	THPX-680	RSZ-THPX-680
725 cc	14,5 cm	6,7 cm	THPX-725	RSZ-THPX-725
765 cc	14,7 cm	6,7 cm	THPX-765	RSZ-THPX-765

SILTEX™ Round Breast Implants,  
Ultra High Profile,  
Cohesive I™



Resterilizable  
Gel Sizer\*

Volume	Diameter	Projection	Catalog #	Resterilizable Gel Sizer*
135 cc	8,0 cm	4,3 cm	354-5135	RSZ-5135
160 cc	8,4 cm	4,5 cm	354-5160	RSZ-5160
185 cc	8,6 cm	4,6 cm	354-5185	RSZ-5185
215 cc	8,9 cm	4,7 cm	354-5215	RSZ-5215
240 cc	9,2 cm	4,9 cm	354-5240	RSZ-5240
270 cc	9,5 cm	5,0 cm	354-5270	RSZ-5270
295 cc	9,9 cm	5,2 cm	354-5295	RSZ-5295
320 cc	10,0 cm	5,3 cm	354-5320	RSZ-5320
350 cc	10,3 cm	5,4 cm	354-5350	RSZ-5350
375 cc	10,5 cm	5,5 cm	354-5375	RSZ-5375
400 cc	10,8 cm	5,6 cm	354-5400	RSZ-5400
430 cc	11,1 cm	5,8 cm	354-5430	RSZ-5430
455 cc	11,3 cm	5,9 cm	354-5455	RSZ-5455
480 cc	11,6 cm	6,0 cm	354-5480	RSZ-5480
535 cc	12,1 cm	6,3 cm	354-5535	RSZ-5535
590 cc	12,6 cm	6,5 cm	354-5590	RSZ-5590

Smooth Round Breast Implants,  
**Moderate Profile,**  
Cohesive I™



Resterilizable  
Gel Sizer\*

Volume	Diameter	Projection	Catalog #	Resterilizable Gel Sizer*
125 cc	10,0 cm	2,2 cm	350-7125 BC	RSZ-7125
150 cc	10,3 cm	2,3 cm	350-7150 BC	RSZ-7150
175 cc	11,2 cm	2,4 cm	350-7175 BC	RSZ-7175
200 cc	11,7 cm	2,5 cm	350-7200 BC	RSZ-7200
225 cc	12,2 cm	2,6 cm	350-7225 BC	RSZ-7225
250 cc	12,3 cm	2,8 cm	350-7250 BC	RSZ-7250
275 cc	13,2 cm	2,9 cm	350-7275 BC	RSZ-7275
300 cc	13,5 cm	3,0 cm	350-7300 BC	RSZ-7300
325 cc	13,9 cm	3,0 cm	350-7325 BC	RSZ-7325
350 cc	14,2 cm	3,1 cm	350-7350 BC	RSZ-7350
375 cc	14,4 cm	3,2 cm	350-7375 BC	RSZ-7375
400 cc	14,5 cm	3,2 cm	350-7400 BC	RSZ-7400
450 cc	14,9 cm	3,2 cm	350-7450 BC	RSZ-7450
500 cc	15,2 cm	3,4 cm	350-7500 BC	RSZ-7500
550 cc	15,9 cm	3,6 cm	350-7550 BC	RSZ-7550
600 cc	16,5 cm	3,7 cm	350-7600 BC	RSZ-7600
700 cc	17,4 cm	3,9 cm	350-7700 BC	RSZ-7700
800 cc	18,2 cm	4,1 cm	350-7800 BC	RSZ-7800

Smooth Round Breast Implants,  
**Moderate Plus Profile,**  
Cohesive I™



Resterilizable  
Gel Sizer\*

Volume	Diameter	Projection	Catalog #	Resterilizable Gel Sizer*
125 cc	8,9 cm	2,8 cm	350-1251 BC	RSZ-1251
150 cc	9,5 cm	2,9 cm	350-1501 BC	RSZ-1501
175 cc	10,0 cm	3,1 cm	350-1751 BC	RSZ-1751
200 cc	10,5 cm	3,2 cm	350-2001 BC	RSZ-2001
225 cc	10,9 cm	3,3 cm	350-2251 BC	RSZ-2251
250 cc	11,3 cm	3,4 cm	350-2501 BC	RSZ-2501
275 cc	11,7 cm	3,5 cm	350-2751 BC	RSZ-2751
300 cc	12,0 cm	3,6 cm	350-3001 BC	RSZ-3001
325 cc	12,3 cm	3,8 cm	350-3251 BC	RSZ-3251
350 cc	12,5 cm	3,9 cm	350-3501 BC	RSZ-3501
375 cc	12,8 cm	4,0 cm	350-3751 BC	RSZ-3751
400 cc	13,1 cm	4,0 cm	350-4001 BC	RSZ-4001
450 cc	13,6 cm	4,2 cm	350-4501 BC	RSZ-4501
500 cc	14,1 cm	4,3 cm	350-5001 BC	RSZ-5001
550 cc	14,6 cm	4,5 cm	350-5501 BC	RSZ-5501
600 cc	15,0 cm	4,6 cm	350-6001 BC	RSZ-6001
700 cc	15,8 cm	4,9 cm	350-7001 BC	RSZ-7001
800 cc	16,5 cm	5,1 cm	350-8001 BC	RSZ-8001

Smooth Round Breast Implants,  
**Moderate Plus Profile Xtra**



Resterilizable  
Gel Sizer\*

Volume	Diameter	Projection	Catalog #	Resterilizable Gel Sizer*
130 cc	8,9 cm	3,1 cm	SMPX-130	RSZ-MPX-130
160 cc	9,5 cm	3,3 cm	SMPX-160	RSZ-MPX-160
190 cc	10 cm	3,4 cm	SMPX-190	RSZ-MPX-190
215 cc	10,4 cm	3,6 cm	SMPX-215	RSZ-MPX-215
240 cc	10,8 cm	3,7 cm	SMPX-240	RSZ-MPX-240
270 cc	11,4 cm	3,8 cm	SMPX-270	RSZ-MPX-270
295 cc	11,5 cm	4 cm	SMPX-295	RSZ-MPX-295
325 cc	11,9 cm	4,1 cm	SMPX-325	RSZ-MPX-325
350 cc	12,3 cm	4,1 cm	SMPX-350	RSZ-MPX-350
370 cc	12,6 cm	4,1 cm	SMPX-370	RSZ-MPX-370
405 cc	12,7 cm	4,4 cm	SMPX-405	RSZ-MPX-405
440 cc	13,1 cm	4,5 cm	SMPX-440	RSZ-MPX-440
490 cc	13,6 cm	4,7 cm	SMPX-490	RSZ-MPX-490
545 cc	14 cm	4,9 cm	SMPX-545	RSZ-MPX-545
605 cc	14,5 cm	5,1 cm	SMPX-605	RSZ-MPX-605
645 cc	14,9 cm	5,1 cm	SMPX-645	RSZ-MPX-645
755 cc	15,7 cm	5,4 cm	SMPX-755	RSZ-MPX-755

Smooth Round Breast Implants,  
**High Profile,**  
Cohesive I™



Resterilizable  
Gel Sizer\*

Volume	Diameter	Projection	Catalog #	Resterilizable Gel Sizer*
125 cc	8,3 cm	3,5 cm	350-1254 BC	RSZ-1254
150 cc	8,8 cm	3,7 cm	350-1504 BC	RSZ-1504
175 cc	9,3 cm	3,9 cm	350-1754 BC	RSZ-1754
200 cc	9,7 cm	4,0 cm	350-2004 BC	RSZ-2004
225 cc	10,1 cm	4,2 cm	350-2254 BC	RSZ-2254
250 cc	10,5 cm	4,3 cm	350-2504 BC	RSZ-2504
275 cc	10,8 cm	4,4 cm	350-2754 BC	RSZ-2754
300 cc	11,1 cm	4,5 cm	350-3004 BC	RSZ-3004
325 cc	11,4 cm	4,6 cm	350-3254 BC	RSZ-3254
350 cc	11,7 cm	4,8 cm	350-3504 BC	RSZ-3504
375 cc	12,0 cm	4,8 cm	350-3754 BC	RSZ-3754
400 cc	12,2 cm	5,0 cm	350-4004 BC	RSZ-4004
425 cc	12,5 cm	5,0 cm	350-4254 BC	RSZ-4254
450 cc	12,8 cm	5,1 cm	350-4504 BC	RSZ-4504
500 cc	13,2 cm	5,3 cm	350-5004 BC	RSZ-5004
550 cc	13,6 cm	5,5 cm	350-5504 BC	RSZ-5504
600 cc	14,0 cm	5,6 cm	350-6004 BC	RSZ-6004
650 cc	14,4 cm	5,7 cm	350-6504 BC	RSZ-6504
700 cc	14,8 cm	5,8 cm	350-7004 BC	RSZ-7004
800 cc	15,5 cm	6,0 cm	350-8004 BC	RSZ-8004

Smooth Round Breast Implants,  
**High Profile Xtra**



Resterilizable  
Gel Sizer\*

Volume	Diameter	Projection	Catalog #	Resterilizable Gel Sizer*
150 cc	8,3 cm	4,1 cm	SHPX-150	RSZ-SHPX-150
180 cc	8,8 cm	4,4 cm	SHPX-180	RSZ-SHPX-180
200 cc	9,2 cm	4,5 cm	SHPX-200	RSZ-SHPX-200
235 cc	9,5 cm	4,9 cm	SHPX-235	RSZ-SHPX-235
260 cc	9,9 cm	5 cm	SHPX-260	RSZ-SHPX-260
285 cc	10,3 cm	5 cm	SHPX-285	RSZ-SHPX-285
335 cc	10,7 cm	5,4 cm	SHPX-335	RSZ-SHPX-335
355 cc	11 cm	5,5 cm	SHPX-355	RSZ-SHPX-355
380 cc	11,3 cm	5,5 cm	SHPX-380	RSZ-SHPX-380
415 cc	11,5 cm	5,8 cm	SHPX-415	RSZ-SHPX-415
450 cc	11,9 cm	5,9 cm	SHPX-450	RSZ-SHPX-450
465 cc	12,1 cm	5,8 cm	SHPX-465	RSZ-SHPX-465
490 cc	12,5 cm	5,8 cm	SHPX-490	RSZ-SHPX-490
535 cc	12,7 cm	6 cm	SHPX-535	RSZ-SHPX-535
595 cc	13,1 cm	6,3 cm	SHPX-595	RSZ-SHPX-595
650 cc	13,5 cm	6,5 cm	SHPX-650	RSZ-SHPX-650
700 cc	14,1 cm	6,5 cm	SHPX-700	RSZ-SHPX-700
755 cc	14,4 cm	6,7 cm	SHPX-755	RSZ-SHPX-755
790 cc	14,8 cm	6,7 cm	SHPX-790	RSZ-SHPX-790

Smooth Round Breast Implants,  
**Ultra High Profile,**  
Cohesive I™



Resterilizable  
Gel Sizer\*

Volume	Diameter	Projection	Catalog #	Resterilizable Gel Sizer*
135 cc	7,8 cm	4,1 cm	350-5135BC	RSZ-5135
160 cc	8,2 cm	4,3 cm	350-5160BC	RSZ-5160
185 cc	8,4 cm	4,4 cm	350-5185BC	RSZ-5185
215 cc	8,7 cm	4,5 cm	350-5215BC	RSZ-5215
240 cc	9,0 cm	4,7 cm	350-5240BC	RSZ-5240
270 cc	9,3 cm	4,8 cm	350-5270BC	RSZ-5270
295 cc	9,7 cm	5,0 cm	350-5295BC	RSZ-5295
320 cc	9,8 cm	5,1 cm	350-5320BC	RSZ-5320
350 cc	10,1 cm	5,2 cm	350-5350BC	RSZ-5350
375 cc	10,4 cm	5,3 cm	350-5375BC	RSZ-5375
400 cc	10,6 cm	5,4 cm	350-5400BC	RSZ-5400
430 cc	10,9 cm	5,6 cm	350-5430BC	RSZ-5430
455 cc	11,2 cm	5,7 cm	350-5455BC	RSZ-5455
480 cc	11,4 cm	5,8 cm	350-5480BC	RSZ-5480
535 cc	12,0 cm	6,1 cm	350-5535BC	RSZ-5535
590 cc	12,5 cm	6,3 cm	350-5590BC	RSZ-5590

SILTEX™ Round Breast Implants,  
Moderate Profile,  
Cohesive II™



Resterilizable  
Gel Sizer\*

Volume	Diameter	Projection	Catalog #	Resterilizable Gel Sizer*
100 cc	9,1 cm	2,6 cm	354-1009	RSZ-7100
125 cc	9,3 cm	2,8 cm	354-1259	RSZ-7125
150 cc	10,1 cm	2,4 cm	354-1509	RSZ-7150
175 cc	10,5 cm	2,9 cm	354-1759	RSZ-7175
200 cc	11,2 cm	2,8 cm	354-2009	RSZ-7200
225 cc	11,5 cm	3,0 cm	354-2259	RSZ-7225
250 cc	11,6 cm	3,5 cm	354-2509	RSZ-7250
275 cc	12,5 cm	3,1 cm	354-2759	RSZ-7275
300 cc	12,6 cm	3,6 cm	354-3009	RSZ-7300
325 cc	13,1 cm	3,6 cm	354-3259	RSZ-7325
350 cc	13,4 cm	3,5 cm	354-3509	RSZ-7350
375 cc	13,4 cm	3,9 cm	354-3759	RSZ-7375
400 cc	13,7 cm	3,8 cm	354-4009	RSZ-7400
450 cc	13,7 cm	4,6 cm	354-4509	RSZ-7450
500 cc	14,2 cm	4,8 cm	354-5009	RSZ-7500
550 cc	14,5 cm	4,5 cm	354-5509	RSZ-7550
600 cc	15,3 cm	4,6 cm	354-6009	RSZ-7600
700 cc	16,3 cm	5,0 cm	354-7009	RSZ-7700
800 cc	16,7 cm	5,4 cm	354-8009	RSZ-7800

SILTEX™ Round Breast Implants,  
Moderate Plus Profile,  
Cohesive II™



Resterilizable  
Gel Sizer\*

Volume	Diameter	Projection	Catalog #	Resterilizable Gel Sizer*
125 cc	8,8 cm	2,9 cm	324-5125	RSZ-1251
150 cc	9,4 cm	3,0 cm	324-5150	RSZ-1501
175 cc	10,0 cm	3,2 cm	324-5175	RSZ-1751
200 cc	10,5 cm	3,3 cm	324-5200	RSZ-2001
225 cc	10,9 cm	3,5 cm	324-5225	RSZ-2251
250 cc	11,3 cm	3,6 cm	324-5250	RSZ-2501
275 cc	11,7 cm	3,7 cm	324-5275	RSZ-2751
300 cc	12,0 cm	3,7 cm	324-5300	RSZ-3001
325 cc	12,3 cm	3,8 cm	324-5325	RSZ-3251
350 cc	12,6 cm	3,8 cm	324-5350	RSZ-3501
375 cc	12,9 cm	3,9 cm	324-5375	RSZ-3751
400 cc	13,2 cm	4,0 cm	324-5400	RSZ-4001
450 cc	13,7 cm	4,1 cm	324-5450	RSZ-4501
500 cc	14,1 cm	4,2 cm	324-5500	RSZ-5001
550 cc	14,4 cm	4,4 cm	324-5550	RSZ-5501
600 cc	14,7 cm	4,5 cm	324-5600	RSZ-6001
700 cc	15,7 cm	4,8 cm	324-5700	RSZ-7001
800 cc	16,6 cm	5,0 cm	324-5800	RSZ-8001

SILTEX™ Round Breast Implants,  
High Profile,  
Cohesive II™



Resterilizable  
Gel Sizer\*

Volume	Diameter	Projection	Catalog #	Resterilizable Gel Sizer*
125 cc	8,4 cm	3,6 cm	324-4125	RSZ-1254
150 cc	8,9 cm	3,8 cm	324-4150	RSZ-1504
175 cc	9,4 cm	4,0 cm	324-4175	RSZ-1754
200 cc	9,9 cm	4,1 cm	324-4200	RSZ-2004
225 cc	10,2 cm	4,3 cm	324-4225	RSZ-2254
250 cc	10,5 cm	4,5 cm	324-4250	RSZ-2504
275 cc	10,9 cm	4,6 cm	324-4275	RSZ-2754
300 cc	11,1 cm	4,7 cm	324-4300	RSZ-3004
325 cc	11,5 cm	4,8 cm	324-4325	RSZ-3254
350 cc	11,7 cm	4,9 cm	324-4350	RSZ-3504
375 cc	12,0 cm	5,0 cm	324-4375	RSZ-3754
400 cc	12,3 cm	5,1 cm	324-4400	RSZ-4004
425 cc	12,5 cm	5,2 cm	324-4425	RSZ-4254
450 cc	12,7 cm	5,2 cm	324-4450	RSZ-4504
500 cc	13,2 cm	5,4 cm	324-4500	RSZ-5004
550 cc	13,5 cm	5,6 cm	324-4550	RSZ-5504
600 cc	14,0 cm	5,7 cm	324-4600	RSZ-6004
650 cc	14,3 cm	5,8 cm	324-4650	RSZ-6504
700 cc	14,7 cm	6,0 cm	324-4700	RSZ-7004
800 cc	15,4 cm	6,3 cm	324-4800	RSZ-8004





# PROVEN TEXTURE YOU CAN TRUST

SILTEX™ Texture provides you and your patients peace of mind

Our SILTEX™ Texture provides consistent coefficient of friction throughout the device to minimise implant rotation.

## Primary Augmentation

MENTOR® Round Gel Breast Implant Core Study,  
Long term 10 years<sup>9</sup> (N = 552)

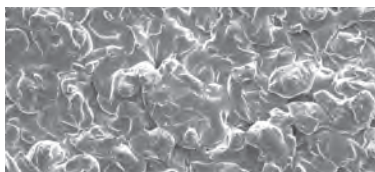
Implant malposition	1.0%
---------------------	------



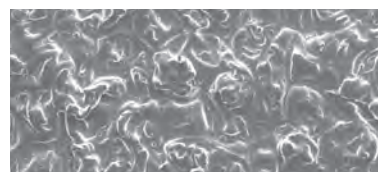
i. Kaplan-Meier estimated risk of first occurrence. MemoryGel™ Core Studies.

## A closer look at MENTOR® patented SILTEX™ Texture

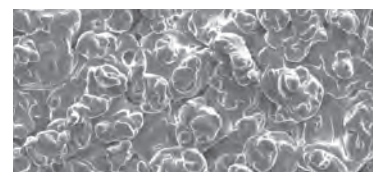
SEM images of SILTEX™ Texture



Anterior View



Radius View



Posterior View



Cross Section

## All Texture is NOT the Same<sup>19</sup>

### MENTOR® SILTEX™ Texture<sup>iii,19</sup>

### Allergan® Biocell Texture<sup>19</sup>

Surface Description	Low Surface Area <sup>23</sup>	High Surface Area <sup>23</sup>
Manufacturing Technique	Negative contact imprint off polyurethane texturing foam	Shell is pressed onto bed of finely granular salt: salt loss technique
Pore Size Width (µm)	70-150	600-800
Pore Size Depth/Height (µm)	40-100 (height)	150-200 (depth)
Edge(µm)	0	100-150
Distribution	Regular	Irregular
Depression or Nodules	Nodules	Depressions

iii. Specification for MemoryGel™ Round Gel implants.  
The third-party trademarks used herein are trademarks of their respective owners.

# PROVEN PERFORMANCE

Implants continuously delivering world class clinical results



Results that instill confidence in your patients:

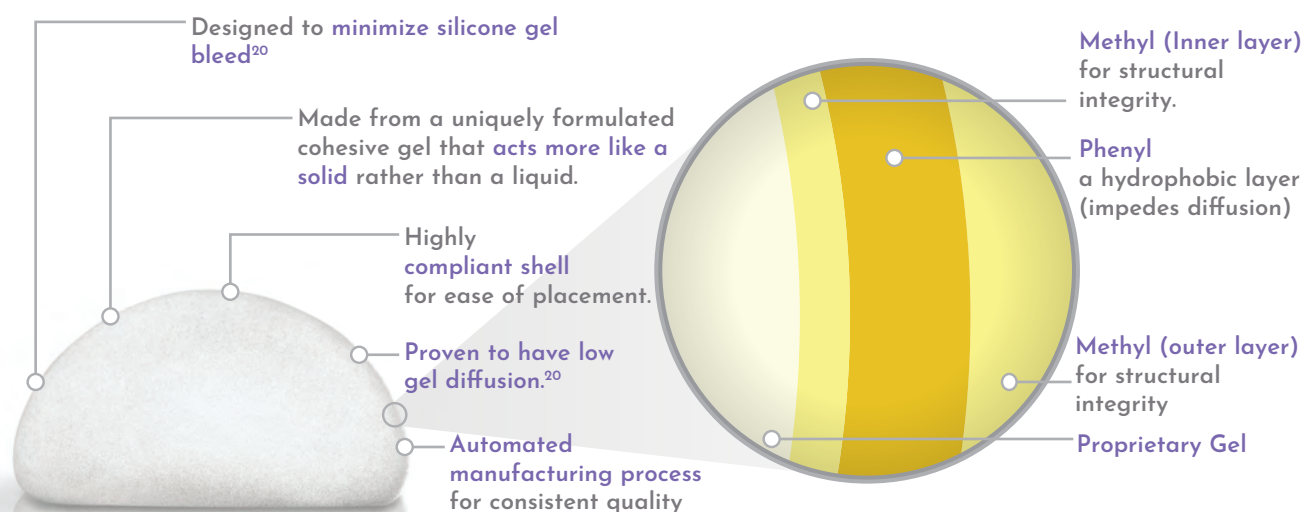
## Primary Augmentation

MENTOR® Round Gel Breast Implant Core Study,  
Long term 10 years<sup>9</sup> (N = 552)

Capsular Contracture <sup>i</sup> (Baker III/IV)	12.1%
Wrinkling <sup>i</sup>	1.3%
Infection <sup>i</sup>	1.6%
Implant malposition <sup>i</sup>	1.0%
Rupture <sup>ii</sup>	5.8%

i. Kaplan-Meier estimated risk of first occurrence. MemoryGel™ Core Studies.

ii. By implant. Overall Suspected or Confirmed



MemoryGel™ Xtra  
empowers you to look  
and *feel* your best.



# PROVEN PEACE OF MIND

MENTOR® Breast Implants come with the most comprehensive plan in the industry<sup>21</sup>

## Mentor Warranties & Product Replacement Policy

### MENTOR Promise

#### MENTOR Promise Protection Plan Overview



**FREE AND AUTOMATIC ENROLLMENT**



**FREE LIFETIME PRODUCTION REPLACEMENT FOR RUPTURE\***



**UPTO €1000 FINANCIAL ASSISTANCE COVERAGE FOR RUPTURE<sup>1</sup>**



**FREE PRODUCT REPLACEMENT IN THE EVENTS OF CAPSULAR CONTRACTURE (Baker III/VI), DOUBLE CAPSULE AND LATE STAGE SEROMA<sup>1</sup>**



**FREE CONTRALATERAL IMPLANT at your surgeon's request**



**Global Brand for Breast Implants<sup>10</sup>**



**First Breast Implant company to receive FDA Approval<sup>22</sup>**



**At MENTOR we put patient safety as our number one priority**



**98% Patient Satisfaction at 10 years<sup>x,11</sup>**

x. Based on patient survey at 10 years in the MENTOR® MemoryGel™ Breast Implant 10-Year Core Gel Clinical Study Final Report

For further information, talk to your Mentor Sales Representative or visit [mentorwwllc.eu](http://mentorwwllc.eu).

1. Product Dimensions for MemoryGel and MemoryGel Xtra Breast Implants and Mentor R&D Compression Benchtop Testing - July 2017. 2. Mentor Consumer Preference Market Research Report - July 2017. 3. Product Dimensions for MemoryGel™ and MemoryGel™ Xtra Breast Implants Mentor R&D Benchtop Testing (Pich Test) - July 2017. 4. Mentor R&D Compression Benchtop Testing - July 2017. 5. Mentor Implant Shell Mechanical Properties between Allergan Natrelle and MemoryGel Xtra - August 2017. 6. Allergan Natrelle Inspira Product Catalog 2017. 7. Mentor Consumer Preference Market Research Report - July 2017. 8. Mentor Surgeon Preference Market Research Report - July 2017. 9. Summary of the Safety and Effectiveness of MENTOR® MemoryGel™ Silicone Gel-Filled Implants in Patients who are Undergoing Primary Breast Augmentation, Primary Breast Reconstruction, or Revision. 10-Year Core Gel Final Clinical Study Report. April 2013. 10. Based on worldwide market share. Data as of June 2017. 11. Summary of the Safety and Effectiveness of MENTOR® MemoryGel™ Silicone Gel-Filled Implants in Patients who are Undergoing Primary Breast Augmentation, Primary Breast Reconstruction, or Revision. 10-Year Core Gel Final Clinical Study Report. April 2013. 12. MENTOR® MemoryGel™ Post Approval Study Seventh Annual Report, November 5, 2013. 13. Adjunct Study Final Report for MENTOR® MemoryGel™ Silicone Gel-Filled Breast Implants, 02 November 2012. 14. Mentor Worldwide, LLC. MENTOR® MemoryShape™ Post-Approval Cohort Study (formerly Contour Profile Gel Core Study) Final Clinical Study Report, 02 June 2015. 15. MENTOR® Becker Expander/Breast Implant Clinical Trial 2013 Annual Report. 16. MENTOR® MemoryShape™ Post-Approval Cohort Study (formerly Contour Profile Gel Core Study, 2013. 17. MENTOR® CPG™ Styles Study: A Study of the Safety of the Contour Profile Gel Breast Implants in Subjects who are Undergoing Primary Breast Augmentation, Primary Breast Reconstruction, or Revision, 2015. 18. MENTOR® MemoryShape™ Post-Approval Continued Access Study (formerly Contour Profile Gel Continued Access Study), 2014. 19. Danino, A. M., Basmacioglu, P., Saito, S., Rocher, F., Blanchet-Bardon, C., Revol, M., & Servant, J. M. (2001). Comparison of the capsular response to the Biocell RTV and Mentor 1600 Siltex breast implant surface texturing: a scanning electron microscopic study. *Plastic and reconstructive surgery*, 108(7), 2047-2052. 20. FDA: Summary of Safety and Effectiveness Data: MENTOR® MemoryGel™ Silicone Gel-Filled Breast Implants. P030053. Recommended April 13, 2005. Notice of Approval November 17, 2006. <http://www.accessdata.fda.gov/scripts/cdrh/cfdocs/cfpma/pma.cfm?id=p030053>, Accessed 1/19/2018. 21. Based on warranty comparisons of the following breast implants: Allergan Natrelle: <http://www.natrelle.co.uk/breastenhancement/Pages/warranty.aspx>, EuroSilicone & Nagor: [http://nagor.com/pdf/Warranty\\_PDF\\_Nagor.pdf](http://nagor.com/pdf/Warranty_PDF_Nagor.pdf), Arion: [http://www.laboratoires-arion.com/images/arion/ARION\\_GUARANTEE\\_PROGRAM\\_ANG.pdf](http://www.laboratoires-arion.com/images/arion/ARION_GUARANTEE_PROGRAM_ANG.pdf), Polytech: [http://www.polytechhealth.info/images/pdf/loE\\_Information\\_engl\\_2015-01.pdf](http://www.polytechhealth.info/images/pdf/loE_Information_engl_2015-01.pdf), Motiva: <https://motivaimplants.com/product-warranty/>, Sebbin: Garantie des IMPLANTS MAMMAIRES and La garantie premium, Accessed January 20 2018. 22. FDA website, <http://www.fda.gov/Medical-Devices/ProductsandMedicalProcedures/ImplantsandProsthetics/BreastImplants/ucm064461.htm>. Accessed 5/5/2015. 23. Anna Loch-Wilkinson, Kenneth Beath, Rogert John William Knight, William Lousi Fick Wessels, Mark Magnusson, Tim Papadopoulos, et al. Breast implant associated Large Cell Lymphoma in Australia and New Zealand -- high surface area textured implants are associated with increased risk. *Plast Reconstr Surg*. 2017. Epub 2017/05/05. doi: 10.1097/prs.0000000000003654 PMID: 28481803

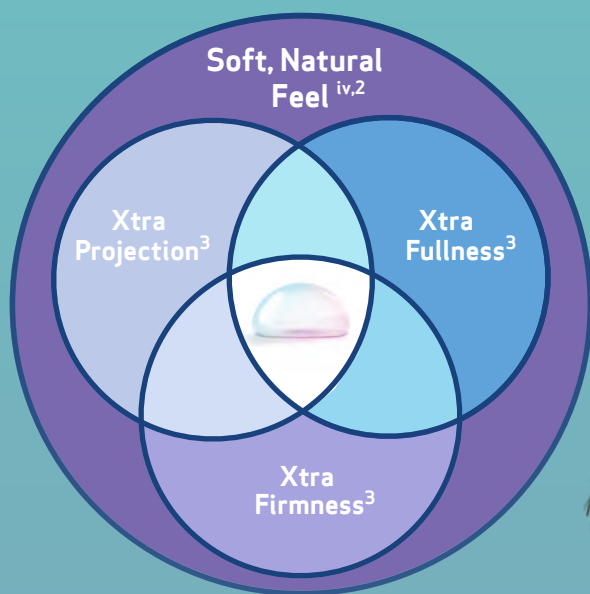
#### Important Safety Information:

MENTOR® MemoryGel™ Breast Implants are indicated for breast augmentation, in women who are at least 18 years old, or for breast reconstruction. Breast implant surgery should not be performed in those women with active infection anywhere in their body, those with existing cancer or pre-cancer of their breast(s), those who have not received adequate treatment for these conditions or those who are pregnant or nursing. There are risks associated with breast implant surgery. Breast implants are not lifetime devices and breast implantation is not necessarily a one-time surgery. The most common complications with MENTOR® MemoryGel™ Breast Implants include re-operation, implant removal, capsular contracture, asymmetry, and breast pain. A lower risk of complication is implant rupture, which is most often silent. The health consequences of a ruptured silicone gel-filled breast implant have not been fully established. Screenings such as mammography, MRI, or ultrasound are recommended after initial implant surgery to assist in detecting implant rupture. Your patient needs to be informed and understand the risks and benefits of breast implants, and she should be provided with an opportunity to consult with you prior to deciding on surgery. For detailed indications, contraindications, warnings and precautions associated with the use of all MENTOR® Implantable Devices, please refer to the Product Insert Data Sheet provided with each product, or review the Important Safety Information provided at [www.mentorwwllc.eu](http://www.mentorwwllc.eu). The most common complications for breast augmentation with MemoryGel™ Implants include any reoperation, capsular contracture, nipple sensation changes, and implant removal with or without replacement. The most common complications with CPG™ Implants for breast augmentation include reoperation for any reason, implant removal with or without replacement, and ptosis. A lower risk of complication is rupture. The health consequences of a ruptured silicone gel breast implant have not been fully established. MRI screenings are recommended three years after initial implant surgery and then every two years after to detect silent rupture.



All other companies' brand names mentioned herein are the trademarks of their respective owners.  
© Mentor Worldwide LLC 090539-180423

# Why MemoryGel™ Xtra Breast Implants?¹



 **MENTOR**®

PART OF THE *Johnson & Johnson* FAMILY OF COMPANIES

All other companies' brand names mentioned herein are the trademarks of their respective owners.  
© Mentor Worldwide LLC 090539-180423

iv. In-person consumer survey with 452 participants